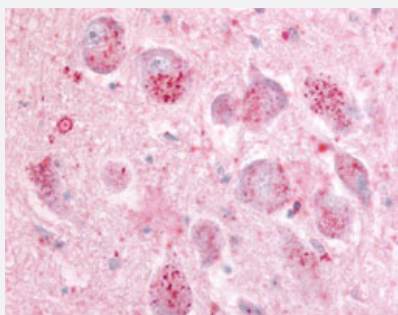


GPR21 polyclonal antibody

Catalog # PAB16198

Size 50 ug

Applications



Immunohistochemistry (Formalin/PFA-fixed paraffin-embedded sections)

Immunohistochemical (Formalin/PFA-fixed paraffin-embedded sections) staining of human brain with GPR21 polyclonal antibody (Cat # PAB16198).

Specification

Product Description	Rabbit polyclonal antibody raised against synthetic peptide of GPR21.
Immunogen	A synthetic peptide (conjugated with KLH) corresponding to human GPR21.
Host	Rabbit
Reactivity	Human
Specificity	C-terminal domain of human. Predicted crossreactivity with mouse due to sequence similarity .
Form	Liquid
Purification	Immunoaffinity purification
Recommend Usage	Immunohistochemistry (Formalin/PFA-fixed paraffin-embedded sections) (10 ug/mL) The optimal working dilution should be determined by the end user.
Storage Buffer	In PBS (0.09% sodium azide)
Storage Instruction	Store at 4°C. For long term storage store at -80°C. Aliquot to avoid repeated freezing and thawing.

Note

This product contains sodium azide: a POISONOUS AND HAZARDOUS SUBSTANCE which should be handled by trained staff only.

Applications

- Immunohistochemistry (Formalin/PFA-fixed paraffin-embedded sections)

Immunohistochemical (Formalin/PFA-fixed paraffin-embedded sections) staining of human brain with GPR21 polyclonal antibody (Cat # PAB16198).

Gene Info — GPR21

Entrez GeneID	2844
Protein Accession#	Q99679
Gene Name	GPR21
Gene Alias	-
Gene Description	G protein-coupled receptor 21
Omim ID	601909
Gene Ontology	Hyperlink
Other Designations	OTTHUMP00000022075