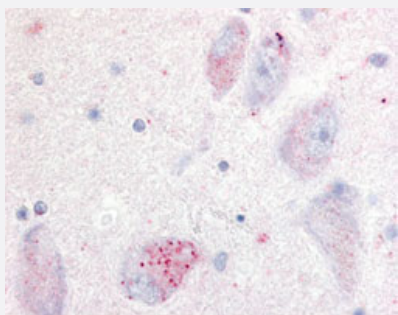


GPR20 polyclonal antibody

Catalog # PAB16197

Size 50 ug

Applications



Immunohistochemistry (Formalin/PFA-fixed paraffin-embedded sections)

Immunohistochemical (Formalin/PFA-fixed paraffin-embedded sections) staining of human nucleus basalis of meynert with GPR20 polyclonal antibody (Cat # PAB16197).

Specification

Product Description	Rabbit polyclonal antibody raised against synthetic peptide of GPR20.
Immunogen	A synthetic peptide corresponding to 18 amino acids to 3rd cytoplasmic domain of human GPR20.
Host	Rabbit
Reactivity	Human
Specificity	Human GPR20. BLAST analysis of the peptide immunogen showed no homology with other human p roteins, except KIF1A (44%), KIF1B (44%).
Form	Liquid
Purification	Immunoaffinity purification
Recommend Usage	Immunohistochemistry (Formalin/PFA-fixed paraffin-embedded sections) (20 ug/mL) The optimal working dilution should be determined by the end user.
Storage Buffer	In PBS (0.09% sodium azide)
Storage Instruction	Store at 4°C. For long term storage store at -80°C. Aliquot to avoid repeated freezing and thawing.

Note

This product contains sodium azide: a POISONOUS AND HAZARDOUS SUBSTANCE which should be handled by trained staff only.

Applications

- Immunohistochemistry (Formalin/PFA-fixed paraffin-embedded sections)

Immunohistochemical (Formalin/PFA-fixed paraffin-embedded sections) staining of human nucleus basalis of meynert with GPR20 polyclonal antibody (Cat # PAB16197).

Gene Info — GPR20

Entrez GeneID	2843
Protein Accession#	Q99678
Gene Name	GPR20
Gene Alias	-
Gene Description	G protein-coupled receptor 20
Omim ID	601908
Gene Ontology	Hyperlink
Other Designations	-