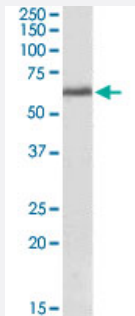


TXK polyclonal antibody

Catalog # PAB15679 Size 100 ug

Applications



Western Blot (Tissue lysate)

TXK polyclonal antibody (Cat # PAB15679)(2 ug/mL) staining of human tonsil lysate (35 ug protein in RIPA buffer). Primary incubation was 1 hour. Detected by chemiluminescence.

Specification

Product Description Goat polyclonal antibody raised against synthetic peptide of TXK.

Immunogen A synthetic peptide corresponding to C-terminus of human TXK.

Sequence C-ELLRAVTEIAETW

Host Goat

Theoretical MW (kDa) 61.3

Reactivity Human

Form Liquid

Purification Antigen affinity purification

Concentration 0.5 mg/mL

Recommend Usage ELISA (1:4000)
Western blot (2-4 ug/mL)
The optimal working dilution should be determined by the end user.

Storage Buffer In Tris saline, pH 7.3 (0.5% BSA, 0.02% sodium azide)

Storage Instruction

Store at -20°C.
Aliquot to avoid repeated freezing and thawing.

Note

This product contains sodium azide: a POISONOUS AND HAZARDOUS SUBSTANCE which should be handled by trained staff only.

Applications

- Western Blot (Tissue lysate)

TXK polyclonal antibody (Cat # PAB15679)(2 ug/mL) staining of human tonsil lysate (35 ug protein in RIPA buffer). Primary incubation was 1 hour. Detected by chemiluminescence.

- Enzyme-linked Immunoabsorbent Assay

Gene Info — TXK

Entrez GeneID[7294](#)**Protein Accession#**[NP_003319.2](#)**Gene Name**

TXK

Gene Alias

BTKL, MGC22473, PSCTK5, PTK4, RLK, TKL

Gene Description

TXK tyrosine kinase

Omim ID[600058](#)**Gene Ontology**[Hyperlink](#)**Other Designations**

PTK4 protein tyrosine kinase 4|tyrosine kinase

Publication Reference

- [Skewed Th1 responses caused by excessive expression of Txk, a member of the Tec family of tyrosine kinases, in patients with Behcet's disease.](#)

Suzuki N, Nara K, Suzuki T.

Clinical Medicine & Research 2006 Jun; 4(2):147.

Application: Flow Cyt, WB, Human, T cells from Patients with Behcet's disease

Pathway

- [Leukocyte transendothelial migration](#)

Disease

- [Cardiovascular Diseases](#)
- [Diabetes Mellitus](#)
- [Edema](#)
- [Kidney Failure](#)
- [Tobacco Use Disorder](#)