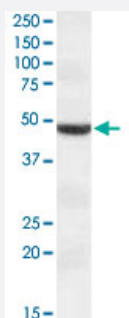


TMPRSS4 polyclonal antibody

Catalog # PAB15676 Size 100 ug

Applications



Western Blot (Cell lysate)

TMPRSS4 polyclonal antibody (Cat # PAB15676) (1 ug/mL) staining of HEK293 lysate (35 ug protein in RIPA buffer). Primary incubation was 1 hour. Detected by chemiluminescence.

Specification

Product Description	Goat polyclonal antibody raised against synthetic peptide of TMPRSS4.
Immunogen	A synthetic peptide corresponding to amino acids 245-57 of human TMPRSS4.
Sequence	HCFRKHTDVFNWK
Host	Goat
Theoretical MW (kDa)	48.2, 47.6
Reactivity	Human
Specificity	Approximately 48 KDa band observed in lysates of cell lines HEK293 and A-549 (calculated MW of 48.2 KDa according to NP_063947.1).
Form	Liquid
Purification	Antigen affinity purification
Concentration	0.5 mg/mL

Recommend Usage	ELISA (1:1000) Western Blot (0.3-1 ug/mL) The optimal working dilution should be determined by the end user.
Storage Buffer	In Tris saline, pH 7.3 (0.5% BSA, 0.02% sodium azide)
Storage Instruction	Store at -20°C. Aliquot to avoid repeated freezing and thawing.
Note	This product contains sodium azide: a POISONOUS AND HAZARDOUS SUBSTANCE which should be handled by trained staff only.

Applications

- Western Blot (Cell lysate)

TMPRSS4 polyclonal antibody (Cat # PAB15676) (1 ug/mL) staining of HEK293 lysate (35 ug protein in RIPA buffer). Primary incubation was 1 hour. Detected by chemiluminescence.

- Enzyme-linked Immunoabsorbent Assay

Gene Info — TMPRSS4

Entrez GeneID	56649
Protein Accession#	NP_063947.1
Gene Name	TMPRSS4
Gene Alias	MT-SP2, TMPRSS3
Gene Description	transmembrane protease, serine 4
Omim ID	606565
Gene Ontology	Hyperlink
Gene Summary	This gene encodes a member of the serine protease family. Serine proteases are known to be involved in a variety of biological processes, whose malfunction often leads to human diseases and disorders. This gene was identified as a gene overexpressed in pancreatic carcinoma. The encoded protein is membrane bound with a N-terminal anchor sequence and a glycosylated extracellular region containing the serine protease domain. Multiple transcript variants encoding different isoforms have been found for this gene. [provided by RefSeq]
Other Designations	membrane-type serine protease 2 transmembrane serine protease 3 type II membrane serine protease

Publication Reference

- [Structural templates predict novel protein interactions and targets from pancreas tumour gene expression data.](#)

Dawelbait G, Winter C, Zhang Y, Pilarsky C, Grutzmann R, Heinrich JC, Schroeder M.

Bioinformatics 2007 Jul; 23(13):i115.