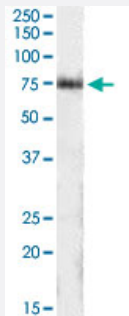


ITPKC polyclonal antibody

Catalog # PAB15634 Size 100 ug

Applications



Western Blot (Tissue lysate)

ITPKC polyclonal antibody (Cat # PAB15634) (1 ug/mL) staining of human pancreas lysate (35 ug protein in RIPA buffer). Primary incubation was 1 hour. Detected by chemiluminescence.

Specification

Product Description	Goat polyclonal antibody raised against synthetic peptide of ITPKC.
Immunogen	A synthetic peptide corresponding to amino acids at internal region of human ITPKC.
Sequence	C-ETERPKQKTEPDRSS
Host	Goat
Theoretical MW (kDa)	75.2
Reactivity	Human
Specificity	Approximately 75 KDa band observed in human pancreas lysates (calculated MW of 75.2 KDa according to NP_079470.1).
Form	Liquid
Purification	Antigen affinity purification
Concentration	0.5 mg/mL

Recommend Usage	ELISA (1:2000) Western Blot (1-3 ug/mL) The optimal working dilution should be determined by the end user.
Storage Buffer	In Tris saline, pH 7.3 (0.5% BSA, 0.02% sodium azide)
Storage Instruction	Store at -20°C. Aliquot to avoid repeated freezing and thawing.
Note	This product contains sodium azide: a POISONOUS AND HAZARDOUS SUBSTANCE which should be handled by trained staff only.

Applications

- Western Blot (Tissue lysate)

ITPKC polyclonal antibody (Cat # PAB15634) (1 ug/mL) staining of human pancreas lysate (35 ug protein in RIPA buffer). Primary incubation was 1 hour. Detected by chemiluminescence.

- Enzyme-linked Immunoabsorbent Assay

Gene Info — ITPKC

Entrez GeneID	80271
Protein Accession#	NP_079470.1
Gene Name	ITPKC
Gene Alias	IP3KC
Gene Description	inositol 1,4,5-trisphosphate 3-kinase C
Omim ID	606476
Gene Ontology	Hyperlink
Gene Summary	This gene encodes a member of the inositol 1,4,5-trisphosphate [Ins(1,4,5)P(3)] 3-kinase family of enzymes that catalyze the phosphorylation of inositol 1,4,5-trisphosphate to 1,3,4,5-tetrakisphosphate. The encoded protein is localized to the nucleus and cytoplasm and has both nuclear import and nuclear export activity. Single nucleotide polymorphisms in this gene are associated with Kawasaki disease
Other Designations	-

Publication Reference

- [ITPKC functional polymorphism associated with Kawasaki disease susceptibility and formation of coronary artery aneurysms.](#)

Onouchi Y, Gunji T, Burns JC, Shimizu C, Newburger JW, Yashiro M, Nakamura Y, Yanagawa H, Wakui K, Fukushima Y, Kishi F, Hamamoto K, Terai M, Sato Y, Ouchi K, Saji T, Nariai A, Kaburagi Y, Yoshikawa T, Suzuki K, Tanaka T, Nagai T, Cho H, Fujino A, Sekine A, Nakamichi R, Tsunoda T, Kawasaki T, Nakamura Y, Hata A.

Nature Genetics 2008 Jan; 40(1):35.

Disease

- [Mucocutaneous Lymph Node Syndrome](#)
- [Tobacco Use Disorder](#)