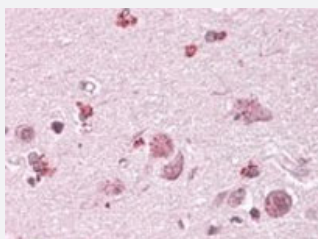


# CHN2 polyclonal antibody

Catalog # PAB15616      Size 100 ug

## Applications



### Immunohistochemistry (Formalin/PFA-fixed paraffin-embedded sections)

CHN2 polyclonal antibody (Cat # PAB15616) (3.8 ug/mL) staining of paraffin embedded human cortex. Steamed antigen retrieval with citrate buffer pH 6, AP-staining.

## Specification

<b>Product Description</b>	Goat polyclonal antibody raised against synthetic peptide of CHN2.
<b>Immunogen</b>	A synthetic peptide corresponding to C-terminus of human CHN2.
<b>Sequence</b>	C-QILIEDVLF
<b>Host</b>	Goat
<b>Theoretical MW (kDa)</b>	38.2, 53.9
<b>Reactivity</b>	Human
<b>Specificity</b>	This antibody is expected to recognize both reported isoforms (NP_004058.1; NP_001035025.1).
<b>Form</b>	Liquid
<b>Purification</b>	Antigen affinity purification
<b>Concentration</b>	0.5 mg/mL
<b>Recommend Usage</b>	ELISA (1:8000) Immunohistochemistry (Formalin/PFA-fixed paraffin-embedded sections) (3-6 ug/mL) The optimal working dilution should be determined by the end user.

Storage Buffer	In Tris saline, pH 7.3 (0.5% BSA, 0.02% sodium azide)
Storage Instruction	Store at -20°C. Aliquot to avoid repeated freezing and thawing.
Note	This product contains sodium azide: a POISONOUS AND HAZARDOUS SUBSTANCE which should be handled by trained staff only.

## Applications

- Immunohistochemistry (Formalin/PFA-fixed paraffin-embedded sections)

CHN2 polyclonal antibody (Cat # PAB15616) (3.8 ug/mL) staining of paraffin embedded human cortex. Steamed antigen retrieval with citrate buffer pH 6, AP-staining.

- Enzyme-linked Immunoabsorbent Assay

## Gene Info — CHN2

Entrez GeneID	<a href="#">1124</a>
Protein Accession#	<a href="#">NP_001035025.1</a>
Gene Name	CHN2
Gene Alias	ARHGAP3, BCH, MGC138360, RHOGAP3
Gene Description	chimerin (chimaerin) 2
Omim ID	<a href="#">602857</a>
Gene Ontology	<a href="#">Hyperlink</a>

Gene Summary	This gene is a member of the chimerin family and encodes a protein with a phorbol-ester/DAG-type zinc finger, a Rho-GAP domain and an SH2 domain. This protein has GTPase-activating protein activity that is regulated by phospholipid binding and binding of diacylglycerol (DAG) induces translocation of the protein from the cytosol to the Golgi apparatus membrane. The protein plays a role in the proliferation and migration of smooth muscle cells. Decreased expression of this gene is associated with high-grade gliomas and breast tumors, and increased expression of this gene is associated with lymphomas. Mutations in this gene have been associated with schizophrenia in men. Alternate transcriptional splice variants, encoding different isoforms, have been characterized. [provided by RefSeq]
--------------	--

Other Designations	beta chimerin rho-GTPase-activating protein 3
--------------------	---

## Publication Reference

- [T cell receptor-dependent tyrosine phosphorylation of beta2-chimaerin modulates its Rac-GAP function in T cells.](#)

Siliceo M, Merida I.

The Journal of Biological Chemistry 2009 Feb; 284(17):11354.

## Disease

- [Angina Pectoris](#)
- [Asthma](#)
- [Cognition](#)
- [Coronary Vasospasm](#)
- [Diabetes Mellitus](#)
- [Diabetic Nephropathies](#)
- [Genetic Predisposition to Disease](#)
- [Tobacco Use Disorder](#)