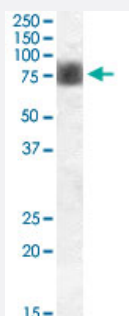


NUAK1 polyclonal antibody

Catalog # PAB15608

Size 100 ug

Applications



Western Blot (Tissue lysate)

NUAK1 polyclonal antibody (Cat # PAB15608) (0.3 ug/mL) staining of human kidney lysate (35 ug protein in RIPA buffer). Primary incubation was 1 hour. Detected by chemiluminescence.

Specification

Product Description	Goat polyclonal antibody raised against synthetic peptide of NUAK1.
Immunogen	A synthetic peptide corresponding to amino acids at internal region of human NUAK1.
Sequence	C-QNRPRPQYLKRYRNR
Host	Goat
Theoretical MW (kDa)	74.3
Reactivity	Human
Specificity	Approximately 75 KDa band observed in human kidney, muscle and ovary lysates (calculated MW of 74.3 KDa according to NP_055655.1).
Form	Liquid
Purification	Antigen affinity purification
Concentration	0.5 mg/mL

Recommend Usage	ELISA (1:8000) Western Blot (0.1-0.3 ug/mL) The optimal working dilution should be determined by the end user.
Storage Buffer	In Tris saline, pH 7.3 (0.5% BSA, 0.02% sodium azide)
Storage Instruction	Store at -20°C. Aliquot to avoid repeated freezing and thawing.
Note	This product contains sodium azide: a POISONOUS AND HAZARDOUS SUBSTANCE which should be handled by trained staff only.

Applications

- Western Blot (Tissue lysate)

NUAK1 polyclonal antibody (Cat # PAB15608) (0.3 ug/mL) staining of human kidney lysate (35 ug protein in RIPA buffer). Primary incubation was 1 hour. Detected by chemiluminescence.

- Enzyme-linked Immunoabsorbent Assay

Gene Info — NUAK1

Entrez GeneID	9891
Protein Accession#	NP_055655.1
Gene Name	NUAK1
Gene Alias	ARK5, KIAA0537
Gene Description	NUAK family, SNF1-like kinase, 1
Omim ID	608130
Gene Ontology	Hyperlink
Gene Summary	SNF1-like kinase
Other Designations	AMP-activated protein kinase family member 5 AMPK-related protein kinase 5

Publication Reference

- [Strong association of ARK5 with tumor invasion and metastasis.](#)

Kusakai G, Suzuki A, Ogura T, Kaminishi M, Esumi H.

Journal of Experimental & Clinical Cancer Research 2004 Jun; 23(2):263.

Application: WB, Human, DLD-1, PANC-1 cells

Disease

- [Cognition](#)
- [Kidney Failure](#)