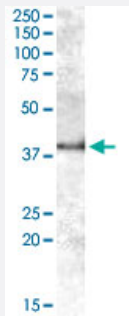


APOL6 polyclonal antibody

Catalog # PAB15606 Size 100 ug

Applications



Western Blot (Tissue lysate)

APOL6 polyclonal antibody (Cat # PAB15606) (1 ug/mL) staining of human kidney lysate (35 ug protein in RIPA buffer). Primary incubation was 1 hour. Detected by chemiluminescence.

Specification

Product Description	Goat polyclonal antibody raised against synthetic peptide of APOL6.
Immunogen	A synthetic peptide corresponding to human APOL6.
Sequence	QRDEDDAPLCED
Host	Goat
Theoretical MW (kDa)	38.1
Reactivity	Human
Specificity	Approximately 38 KDa band observed in human kidney lysates (calculated MW of 38.1 KDa according to NP_085144.1).
Form	Liquid
Purification	Antigen affinity purification
Concentration	0.5 mg/mL

Recommend Usage	ELISA (1:8000) Western Blot (1-3 ug/mL) The optimal working dilution should be determined by the end user.
Storage Buffer	In Tris saline, pH 7.3 (0.5% BSA, 0.02% sodium azide)
Storage Instruction	Store at -20°C. Aliquot to avoid repeated freezing and thawing.
Note	This product contains sodium azide: a POISONOUS AND HAZARDOUS SUBSTANCE which should be handled by trained staff only.

Applications

- Western Blot (Tissue lysate)

APOL6 polyclonal antibody (Cat # PAB15606) (1 ug/mL) staining of human kidney lysate (35 ug protein in RIPA buffer). Primary incubation was 1 hour. Detected by chemiluminescence.

- Enzyme-linked Immunoabsorbent Assay

Gene Info — APOL6

Entrez GeneID	80830
Protein Accession#	NP_085144.1
Gene Name	APOL6
Gene Alias	APOL-VI, APOLVI, DKFZp667M075, FLJ38562, FLJ90164, MGC57495
Gene Description	apolipoprotein L, 6
Omim ID	607256
Gene Ontology	Hyperlink
Gene Summary	This gene is a member of the apolipoprotein L gene family. The encoded protein is found in the cytoplasm, where it may affect the movement of lipids or allow the binding of lipids to organelles. [provided by RefSeq]
Other Designations	apolipoprotein L-VI apolipoprotein L6

Publication Reference

- [The apolipoprotein L gene cluster has emerged recently in evolution and is expressed in human vascular tissue.](#)

Monajemi H, Fontijn RD, Pannekoek H, Horrevoets AJ.

Genomics 2002 Apr; 79(4):539.

Disease

- [Attention](#)
- [Genetic Predisposition to Disease](#)
- [Neuropsychological Tests](#)
- [Problem Solving](#)
- [Schizophrenia](#)