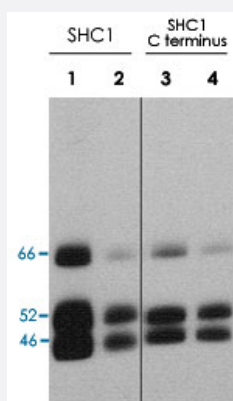


SHC1 polyclonal antibody

Catalog # PAB15601 Size 100 uL

Applications



Western Blot (Cell lysate)

Western blot analysis of SHC1 expression in A-431 cell lysate (Lanes 1, 2, 3, 4). The blots were probed with SHC1 polyclonal antibody (Cat # PAB15601) at 1 : 1000 (Lane 1) or 1 : 4000 (Lane 2) and mouse monoclonal ShcA (C-terminal region) at 1 : 1000 (Lane 3) or 1 : 4000 (Lane 4).

Specification

Product Description	Rabbit polyclonal antibody raised against partial recombinant SHC1.
Immunogen	Recombinant protein corresponding to C-terminus of human SHC1.
Host	Rabbit
Reactivity	Human, Mouse, Rabbit, Rat
Specificity	The human ShcA sequence used has high homology with similar regions in rat and mouse ShcA.
Form	Liquid
Recommend Usage	ELISA (1:2000) Western Blot (1:500) The optimal working dilution should be determined by the end user.
Storage Buffer	In PBS (50% glycerol, 1 mg/mL BSA, 0.05% sodium azide)
Storage Instruction	Store at -20°C. Aliquot to avoid repeated freezing and thawing.

Note

This product contains sodium azide: a POISONOUS AND HAZARDOUS SUBSTANCE which should be handled by trained staff only.

Applications

- Western Blot (Cell lysate)

Western blot analysis of SHC1 expression in A-431 cell lysate (Lanes 1, 2, 3, 4). The blots were probed with SHC1 polyclonal antibody (Cat # PAB15601) at 1 : 1000 (Lane 1) or 1 : 4000 (Lane 2) and mouse monoclonal ShcA (C-terminal region) at 1 : 1000 (Lane 3) or 1 : 4000 (Lane 4).

- Enzyme-linked Immunoabsorbent Assay

Gene Info — SHC1

Entrez GeneID	6464
Gene Name	SHC1
Gene Alias	FLJ26504, SHC, SHCA
Gene Description	SHC (Src homology 2 domain containing) transforming protein 1
Omim ID	600560
Gene Ontology	Hyperlink
Other Designations	OTTHUMP00000035409 OTTHUMP00000035471 SHC (Src homology 2 domain-containing) transforming protein 1 SHC-transforming protein 1

Pathway

- [Chemokine signaling pathway](#)
- [Chronic myeloid leukemia](#)
- [ErbB signaling pathway](#)
- [Focal adhesion](#)
- [Glioma](#)
- [Insulin signaling pathway](#)

- [Natural killer cell mediated cytotoxicity](#)
- [Neurotrophin signaling pathway](#)

Disease

- [Breast cancer](#)
- [Breast Neoplasms](#)
- [Genetic Predisposition to Disease](#)
- [Obesity](#)
- [Tobacco Use Disorder](#)