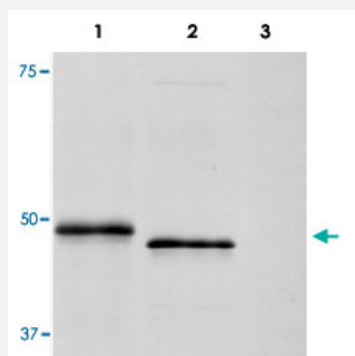


# Streptococcus NADase polyclonal antibody

Catalog # PAB15599      Size 100 uL

## Applications



### Western Blot

Detection of NADase in the culture supernatant of *Hemolytic streptococci* with NADase polyclonal antibody (Cat # PAB15599).

Lane 1 : Culture supernatant of group A streptococcus

Lane 2 : Culture supernatant of group C streptococcus

Lane 3 : Culture medium only (negative control)

## Specification

<b>Product Description</b>	Rabbit polyclonal antibody raised against recombinant NADase.
<b>Immunogen</b>	Recombinant protein corresponding to hemolytic <i>Streptococcus</i> NADase.
<b>Host</b>	Rabbit
<b>Specificity</b>	This antibody reacts with NADase of Group A, C, and G origins.
<b>Form</b>	Liquid
<b>Recommend Usage</b>	Western Blot (1:2000-1:10000) The optimal working dilution should be determined by the end user.
<b>Storage Buffer</b>	In antiserum (0.09% sodium azide)
<b>Storage Instruction</b>	Store at -20°C. Aliquot to avoid repeated freezing and thawing.
<b>Note</b>	This product contains sodium azide: a POISONOUS AND HAZARDOUS SUBSTANCE which should be handled by trained staff only.

## Applications

- Western Blot

Detection of NADase in the culture supernatant of *Hemolytic streptococci* with NADase polyclonal antibody (Cat # PAB15599).

Lane 1 : Culture supernatant of group A streptococcus

Lane 2 : Culture supernatant of group C streptococcus

Lane 3 : Culture medium only (negative control)

- Immunoprecipitation

- Inhibition Assay

## Publication Reference

- [Biochemical and genetic properties of Paenibacillus glycosyl hydrolase having chitosanase activity and discoidin domain.](#)

Kimoto H, Kusaoke H, Yamamoto I, Fujii Y, Onodera T, Taketo A.

The Journal of Biological Chemistry 2002 Apr; 277(17):14695.

- [Molecular epidemiology of nga and NAD glycohydrolase/ADP-ribosyltransferase activity among Streptococcus pyogenes causing streptococcal toxic shock syndrome.](#)

Stevens DL, Salmi DB, McIndoo ER, Bryant AE.

The Journal of Infectious Diseases 2000 Oct; 182(4):1117.

Application: WB, Human, Streptococcus pyogenes strains used for this study were clinical isolates obtained from patients with a variety of GAS infections