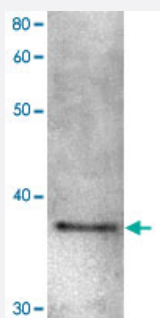


Sgo1 polyclonal antibody

Catalog # PAB15588 Size 100 uL

Applications

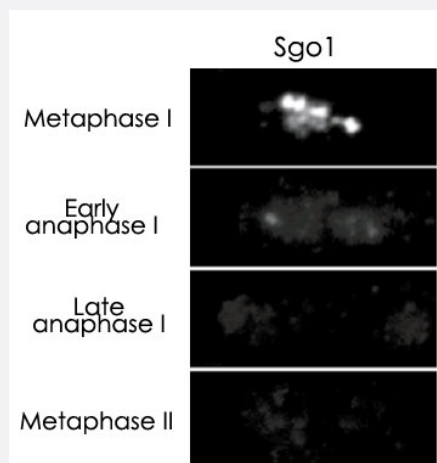


Western Blot (Cell lysate)

Detection of Shugoshin 1 protein by Western blotting.

Sample : Extract of *S. pombe* MP111 cells.

Sgo1 polyclonal antibody (Cat # PAB15588) was diluted 1000 fold before use.



Immunocytochemistry

Immunostaining of Shugoshin 1 in synchronized diploid fission yeast.

Sgo 1 protein was detected with Sgo1 polyclonal antibody (Cat # PAB15588) and Alexa-488-conjugated anti-rabbit antibody.

Specification

Product Description	Rabbit polyclonal antibody raised against recombinant Sgo1.
Immunogen	Recombinant protein corresponding to <i>Schizosaccharomyces pombe</i> Sgo1.
Host	Rabbit
Reactivity	<i>S. pombe</i>
Form	Liquid

Recommend Usage	Western Blot (1:1000) Immunofluorescence (1:100) The optimal working dilution should be determined by the end user.
Storage Buffer	In antiserum (0.05% sodium azide)
Storage Instruction	Store at -20°C. Aliquot to avoid repeated freezing and thawing.
Note	This product contains sodium azide: a POISONOUS AND HAZARDOUS SUBSTANCE which should be handled by trained staff only.

Applications

- Western Blot (Cell lysate)

Detection of Shugoshin 1 protein by Western blotting.

Sample : Extract of *S. pombe* MP111 cells.

Sgo1 polyclonal antibody (Cat # PAB15588) was diluted 1000 fold before use.

- Immunocytochemistry

Immunostaining of Shugoshin 1 in synchronized diploid fission yeast.

Sgo 1 protein was detected with Sgo1 polyclonal antibody (Cat # PAB15588) and Alexa-488-conjugated anti-rabbit antibody.

- Immunofluorescence

Gene Info — sgo1

Entrez GeneID	2541326
Gene Name	sgo1
Gene Alias	-
Gene Description	shugoshin Sgo1
Gene Ontology	Hyperlink
Other Designations	-

Publication Reference

- [Heterochromatin links to centromeric protection by recruiting shugoshin.](#)

Yamagishi Y, Sakuno T, Shimura M, Watanabe Y.

Nature 2008 Sep; 455(7210):251.

Application: WB, S. pombe, Whole-cell extracts from Schizosaccharomyces pombe

- [Shugoshin protects cohesin complexes at centromeres.](#)

Watanabe Y, Kitajima TS.

Philosophical Transactions of the Royal Society of London. Series B, Biological Sciences 2005 Mar; 360(1455):515.

Application: IF, WB, Human, HeLa, Mammalian cells

- [The conserved kinetochore protein shugoshin protects centromeric cohesion during meiosis.](#)

Kitajima TS, Kawashima SA, Watanabe Y.

Nature 2004 Feb; 427(6974):510.

Application: WB, Yeast, Yeast cells