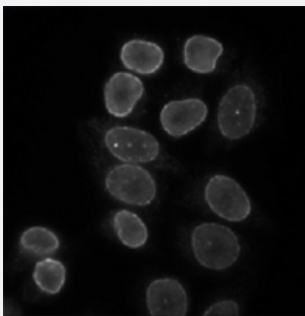


Lbr polyclonal antibody

Catalog # PAB15583

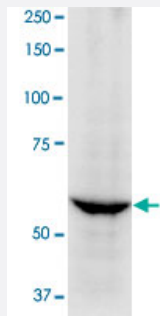
Size 50 ug

Applications



Immunofluorescence

Indirect immunofluorescence staining of HeLa cells with Lbr polyclonal antibody (Cat # PAB15583).



Immunoprecipitation

Identification of Lbr in HeLa cell by immunoprecipitation with Lbr polyclonal antibody (Cat # PAB15583).

Specification

Product Description	Rabbit polyclonal antibody raised against partial recombinant Lbr.
Immunogen	Recombinant protein corresponding to amino acids 1-81 mouse Lbr.
Host	Rabbit
Reactivity	Human, Mouse
Form	Liquid
Recommend Usage	Western Blot (0.2-1 ug/mL) The optimal working dilution should be determined by the end user.

Storage Buffer	In antiserum (0.05% sodium azide)
Storage Instruction	Store at 4°C. For long term storage store at -20°C. Aliquot to avoid repeated freezing and thawing.
Note	This product contains sodium azide: a POISONOUS AND HAZARDOUS SUBSTANCE which should be handled by trained staff only.

Applications

- Western Blot

- Immunofluorescence

Indirect immunofluorescence staining of HeLa cells with Lbr polyclonal antibody (Cat # PAB15583).

- Immunoprecipitation

Identification of Lbr in HeLa cell by immunoprecipitation with Lbr polyclonal antibody (Cat # PAB15583).

Gene Info — Lbr

Entrez GeneID	98386
Gene Name	Lbr
Gene Alias	AI505894, ic
Gene Description	lamin B receptor
Gene Ontology	Hyperlink
Other Designations	ichthyosis

Publication Reference

- [Risk for smoking-related cancer among relatives of lung cancer patients.](#)

Etzel CJ, Amos CI, Spitz MR.

Cancer Research 2003 Dec; 63(23):8531.

- [The lamin B receptor \(LBR\) provides essential chromatin docking sites at the nuclear envelope.](#)

Pyrpasopoulou A, Meier J, Maison C, Simos G, Georgatos SD.

The EMBO Journal 1996 Dec; 15(24):7108.

Application: IEM, IF, WB-Ti, Chicken, Rat, Rat hepatocytes, Rat livers, Purified proteins, Turkey erythrocytes