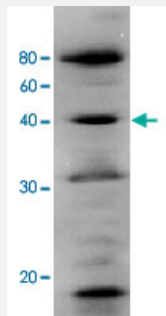


Polb polyclonal antibody

Catalog # PAB15576

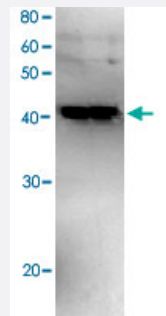
Size 50 ug

Applications



Western Blot (Cell lysate)

Identification of human Polb in the crude extract of MCF-7 cell by western blotting using Polb polyclonal antibody (Cat # PAB15576).



Western Blot (Recombinant protein)

Western blot analysis of recombinant Polb with Polb polyclonal antibody (Cat # PAB15576).

Specification

Product Description	Rabbit polyclonal antibody raised against full length recombinant Polb.
Immunogen	Recombinant protein corresponding to full length rat Polb.
Host	Rabbit
Reactivity	Human, Mouse, Rat
Form	Liquid
Recommend Usage	Western Blot (0.2-1 ug/mL) The optimal working dilution should be determined by the end user.

Storage Buffer	In antiserum (0.05% sodium azide)
Storage Instruction	Store at -20°C. For long term storage store at -80°C. Aliquot to avoid repeated freezing and thawing.
Note	This product contains sodium azide: a POISONOUS AND HAZARDOUS SUBSTANCE which should be handled by trained staff only.

Applications

- Western Blot (Cell lysate)

Identification of human Polb in the crude extract of MCF-7 cell by western blotting using Polb polyclonal antibody (Cat # PAB15576).

- Western Blot (Recombinant protein)

Western blot analysis of recombinant Polb with Polb polyclonal antibody (Cat # PAB15576).

- Immunoprecipitation

Gene Info — Polb

Entrez GeneID	29240
Gene Name	Polb
Gene Alias	-
Gene Description	polymerase (DNA directed), beta
Gene Ontology	Hyperlink
Gene Summary	O
Other Designations	DNA pol beta DNA polymerase beta polymerase-beta

Publication Reference

- [Expression of active rat DNA polymerase beta in Escherichia coli.](#)

Date T, Yamaguchi M, Hirose F, Nishimoto Y, Tanihara K, Matsukage A.

Biochemistry 1988 Apr; 27(8):2983.

Application: WB-Re, Purified proteins