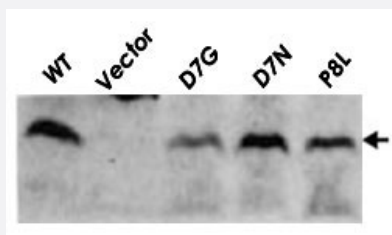


# Escherichia coli RuvC polyclonal antibody

Catalog # PAB15571      Size 100 uL

## Applications



### Western Blot (Recombinant protein)

Detection of RuvC (19kD) proteins in the cell extracts of *E. coli* carrying the plasmids which encode the indicated Mutant RuvC proteins by Western blotting using RuvC polyclonal antibody (Cat # PAB15571).

WT : wild type RuvC protein.

vector : vector plasmid.

D7G, D7N, P8L : mutant RuvC proteins.

## Specification

Product Description	Rabbit polyclonal antibody raised against full length recombinant <i>Escherichia coli</i> RuvC.
Immunogen	Recombinant protein corresponding to full length <i>Escherichia coli</i> RuvC.
Host	Rabbit
Reactivity	<i>Escherichia coli</i>
Form	Liquid
Recommend Usage	Western Blot (1:3000) The optimal working dilution should be determined by the end user.
Storage Buffer	In antiserum (0.05% sodium azide)
Storage Instruction	Store at 4°C. For long term storage store at -20°C. Aliquot to avoid repeated freezing and thawing.
Note	This product contains sodium azide: a POISONOUS AND HAZARDOUS SUBSTANCE which should be handled by trained staff only.

## Applications

- Western Blot (Recombinant protein)

Detection of RuvC (19kD) proteins in the cell extracts of E. coli carrying the plasmids which encode the indicated Mutant RuvC proteins by Western blotting using RuvC polyclonal antibody (Cat # PAB15571).

WT : wild type RuvC protein.

vector : vector plasmid.

D7G, D7N, P8L : mutant RuvC proteins.

## Gene Info — ruvC

Entrez GeneID	<a href="#">946378</a>
Protein Accession#	<a href="#">P0A814</a>
Gene Name	ruvC
Gene Alias	ECK1864, JW1852
Gene Description	component of RuvABC resolvosome, endonuclease
Gene Ontology	<a href="#">Hyperlink</a>
Gene Summary	-
Other Designations	-

## Publication Reference

- [Mutational analysis on structure-function relationship of a holliday junction specific endonuclease RuvC.](#)

Ichiyanagi K, Iwasaki H, Hishida T, Shinagawa H.

Genes to Cells 1998 Sep; 3(9):575.

Application: WB-Tr, E. coli, Strain HRS1200

- [Processing the holliday junction in homologous recombination.](#)

Shinagawa H, Iwasaki H.

Trends in Biochemical Sciences 1996 Mar; 21(3):107.

- [Identification of four acidic amino acids that constitute the catalytic center of the RuvC Holliday junction resolvase.](#)

Saito A, Iwasaki H, Ariyoshi M, Morikawa K, Shinagawa H.

PNAS 1995 Aug; 92(16):7470.

Application: WB-Re, Recombinant protein