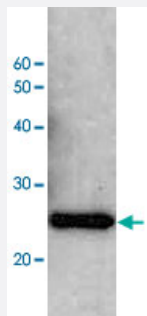


# Escherichia coli LexA polyclonal antibody

Catalog # PAB15567

Size 50 uL

## Applications



### Western Blot (Recombinant protein)

Detection of LexA repressor in the whole cell lysate of *E. coli* by LexA polyclonal antibody (Cat # PAB15567).

## Specification

Product Description	Rabbit polyclonal antibody raised against full length recombinant <i>Escherichia coli</i> LexA.
Immunogen	Recombinant protein corresponding to full length <i>Escherichia coli</i> LexA.
Host	Rabbit
Reactivity	<i>Escherichia coli</i>
Form	Liquid
Recommend Usage	Western Blot (1:1000-1:3000) The optimal working dilution should be determined by the end user.
Storage Buffer	In antiserum (0.05% sodium azide)
Storage Instruction	Store at 4°C. For long term storage store at -20°C. Aliquot to avoid repeated freezing and thawing.
Note	This product contains sodium azide: a POISONOUS AND HAZARDOUS SUBSTANCE which should be handled by trained staff only.

## Applications

- Western Blot (Recombinant protein)

Detection of LexA repressor in the whole cell lysate of E. coli by LexA polyclonal antibody (Cat # PAB15567).

- Immunohistochemistry (Formalin/PFA-fixed paraffin-embedded sections)

- Immunoprecipitation

## Publication Reference

- [Role of the Escherichia coli RecQ DNA helicase in SOS signaling and genome stabilization at stalled replication forks.](#)

Hishida T, Han YW, Shibata T, Kubota Y, Ishino Y, Iwasaki H, Shinagawa H.

Genes & Development 2004 Aug; 18(15):1886.

Application: WB, Bacteria, Escherichia coli