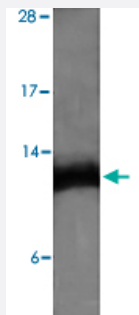


# ENHO polyclonal antibody

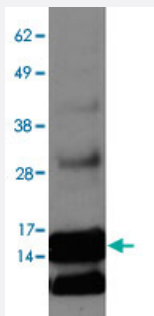
Catalog # PAB15531      Size 100 uL

## Applications



### Western Blot (Tissue lysate)

Western blot on mouse brain lysate with ENHO polyclonal antibody (Cat # PAB15531).



### Western Blot (Transfected lysate)

Western blot on ENHO overexpression lysate with ENHO polyclonal antibody (Cat # PAB15531).

## Specification

<b>Product Description</b>	Rabbit polyclonal antibody raised against synthetic peptide of ENHO.
<b>Immunogen</b>	A synthetic peptide corresponding to amino acids 10-60 of human ENHO.
<b>Host</b>	Rabbit
<b>Reactivity</b>	Bovine, Human, Mouse, Rat
<b>Specificity</b>	100% sequence identity with human and mouse protein, 88% sequence identity with bovine protein. This antibody is useful for Western blot analysis where a band can be seen at ~7.9 KDa.
<b>Form</b>	Liquid

<b>Recommend Usage</b>	Western Blot (2 ug/mL) The optimal working dilution should be determined by the end user.
<b>Storage Buffer</b>	In PBS (30% glycerol, 0.09% sodium azide)
<b>Storage Instruction</b>	Store at 4°C for short term. For long term storage store at -20°C. Aliquot to avoid repeated freezing and thawing.
<b>Note</b>	This product contains sodium azide: a POISONOUS AND HAZARDOUS SUBSTANCE which should be handled by trained staff only.

## Applications

- Western Blot (Tissue lysate)

Western blot on mouse brain lysate with ENHO polyclonal antibody (Cat # PAB15531).

- Western Blot (Transfected lysate)

Western blot on ENHO overexpression lysate with ENHO polyclonal antibody (Cat # PAB15531).

## Gene Info — ENHO

<b>Entrez GeneID</b>	<a href="#">375704</a>
<b>Protein Accession#</b>	<a href="#">Q6UWT2</a>
<b>Gene Name</b>	ENHO
<b>Gene Alias</b>	C9orf165, UNQ470
<b>Gene Description</b>	energy homeostasis associated
<b>Gene Ontology</b>	<a href="#">Hyperlink</a>
<b>Other Designations</b>	GAA470 adropin