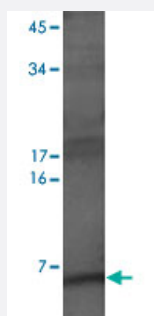


ATOX1 polyclonal antibody

Catalog # PAB15530 Size 100 uL

Applications



Western Blot (Cell lysate)

Western blot on HeLa whole cell extract with ATOX1 polyclonal antibody (Cat # PAB15530).

Specification

Product Description	Rabbit polyclonal antibody raised against ATOX1.
Immunogen	Full length human ATOX1.
Host	Rabbit
Reactivity	Human
Specificity	Western blot analysis, where a band is seen at approx. 6 KDa representing ATOX1 protein.
Form	Liquid
Recommend Usage	Western Blot (1:1000) The optimal working dilution should be determined by the end user.
Storage Buffer	In PBS (0.09% sodium azide)
Storage Instruction	Store at 4°C for short term. For long term storage store at -20°C. Aliquot to avoid repeated freezing and thawing.
Note	This product contains sodium azide: a POISONOUS AND HAZARDOUS SUBSTANCE which should be handled by trained staff only.

Applications

- Western Blot (Cell lysate)

Western blot on HeLa whole cell extract with ATOX1 polyclonal antibody (Cat # PAB15530).

Gene Info — ATOX1

Entrez GeneID	475
Protein Accession#	O00244
Gene Name	ATOX1
Gene Alias	ATX1, HAH1, MGC138453, MGC138455
Gene Description	ATX1 antioxidant protein 1 homolog (yeast)
Omim ID	602270
Gene Ontology	Hyperlink
Gene Summary	This gene encodes a copper chaperone that plays a role in copper homeostasis by binding and transporting cytosolic copper to ATPase proteins in the trans-Golgi network for later incorporation to the ceruloplasmin. This protein also functions as an antioxidant against superoxide and hydrogen peroxide, and therefore, may play a significant role in cancer carcinogenesis. Because of its cytogenetic location, this gene represents a candidate gene for 5q-syndrome. [provided by RefSeq]
Other Designations	antioxidant protein 1 copper transport protein metal transport protein

Disease

- [Genetic Predisposition to Disease](#)
- [Hepatolenticular Degeneration](#)