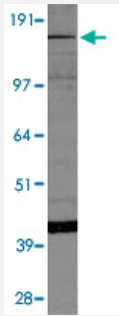


Kdm6b polyclonal antibody

Catalog # PAB15523 Size 100 uL

Applications



Western Blot (Cell lysate)

Western blot of HepG2 cell lysate with Kdm6b polyclonal antibody (Cat # PAB15523).

Specification

Product Description	Rabbit polyclonal antibody raised against synthetic peptide of Kdm6b.
Immunogen	A synthetic peptide corresponding to amino acids 600-650 of mouse Kdm6b.
Host	Rabbit
Reactivity	Human, Mouse, Rat
Specificity	Western blot where a band is seen at approx. 180 KDa.
Form	Liquid
Recommend Usage	Western Blot (2 ug/mL) The optimal working dilution should be determined by the end user.
Storage Buffer	In PBS (30% glycerol, 0.09% sodium azide)
Storage Instruction	Store at 4°C for short term. For long term storage store at -20°C. Aliquot to avoid repeated freezing and thawing.
Note	This product contains sodium azide: a POISONOUS AND HAZARDOUS SUBSTANCE which should be handled by trained staff only.

Applications

- Western Blot (Cell lysate)

Western blot of HepG2 cell lysate with Kdm6b polyclonal antibody (Cat # PAB15523).

Gene Info — Jmjd3

Entrez GeneID [216850](#)

Protein Accession# [P22079](#)

Gene Name Jmjd3

Gene Alias 1700064E03Rik, BC038313, KIAA0346, mKIAA0346

Gene Description jumonji domain containing 3

Gene Ontology [Hyperlink](#)

Other Designations OTTMUSP00000006193

Publication Reference

- [Control of differentiation in a self-renewing mammalian tissue by the histone demethylase JMJD3.](#)

Sen GL, Webster DE, Barragan DI, Chang HY, Khavari PA.

Genes & Development 2008 Jul; 22(14):1865.

Application: IF, IHC, WB-Ce, Human, Human keratinocytes, regenerated organotypic tissues

- [JMJD3 is a histone H3K27 demethylase.](#)

Xiang Y, Zhu Z, Han G, Lin H, Xu L, Chen CD.

Cell Research 2007 Oct; 17(10):850.

Application: WB-Ti, Human, Human benign prostate hyperplasia, prostate cancer