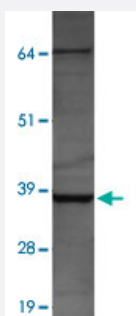


KLK6 polyclonal antibody

Catalog # PAB15522 Size 100 uL

Applications



Western Blot (Tissue lysate)

Western blot of human salivary gland lysate with KLK6 polyclonal antibody (Cat # PAB15522).

Specification

Product Description	Rabbit polyclonal antibody raised against full length recombinant KLK6.
Immunogen	Recombinant protein corresponding to full length human KLK6.
Host	Rabbit
Reactivity	Human
Specificity	Sequence has 85% identity with canine, 82% identity with horse and 80% identity with bovine. This antibody is useful for Western blot, where a band is seen ~38KDa due to glycosylation.
Form	Liquid
Recommend Usage	Western Blot (1:1000) The optimal working dilution should be determined by the end user.
Storage Buffer	In PBS (0.09% sodium azide)
Storage Instruction	Store at 4°C for short term. For long term storage store at -20°C. Aliquot to avoid repeated freezing and thawing.
Note	This product contains sodium azide: a POISONOUS AND HAZARDOUS SUBSTANCE which should be handled by trained staff only.

Applications

- Western Blot (Tissue lysate)

Western blot of human salivary gland lysate with KLK6 polyclonal antibody (Cat # PAB15522).

Gene Info — KLK6

Entrez GeneID	5653
Protein Accession#	Q92876
Gene Name	KLK6
Gene Alias	Bssp, Klk7, MGC9355, NEUROSIN, PRSS18, PRSS9, SP59, ZYME, hK6
Gene Description	kallikrein-related peptidase 6
Omim ID	602652
Gene Ontology	Hyperlink
Gene Summary	Kallikreins are a subgroup of serine proteases having diverse physiological functions. Growing evidence suggests that many kallikreins are implicated in carcinogenesis and some have potential as novel cancer and other disease biomarkers. This gene is one of the fifteen kallikrein subfamily members located in a cluster on chromosome 19. The encoded enzyme is regulated by steroid hormones. In tissue culture, the enzyme has been found to generate amyloidogenic fragments from the amyloid precursor protein, suggesting a potential for involvement in Alzheimer's disease. Multiple alternatively spliced transcript variants that encode different isoforms have been identified for this gene. [provided by RefSeq]
Other Designations	kallikrein 6 (neurosin, zyme) protease M protease, serine, 18 protease, serine, 9

Publication Reference

- [Differential N-glycosylation of kallikrein 6 derived from ovarian cancer cells or the central nervous system.](#)

Kuzmanov U, Jiang N, Smith CR, Soosaipillai A, Diamandis EP.

Molecular & Cellular Proteomics: MCP 2009 Apr; 8(4):791.

Application: ELISA, WB, Human, HEK 293 cells, ovarian cancer ascites fluids and CSFs from patients

- [Caveolin-1-mediated expression and secretion of kallikrein 6 in colon cancer cells.](#)

Henkhaus RS, Roy UK, Cavallo-Medved D, Sloane BF, Gerner EW, Ignatenko NA.

Neoplasia 2008 Feb; 10(2):140.

Application: WB, Human, HCT-116 cels

Disease

- [Birth Weight](#)
- [Genetic Predisposition to Disease](#)
- [Glioblastoma](#)
- [Glioma](#)
- [Leukemia](#)
- [Meningeal Neoplasms](#)
- [Meningioma](#)
- [Prostatic Neoplasms](#)