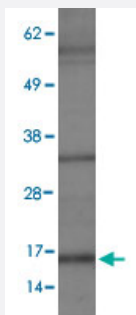


Ccl2 polyclonal antibody

Catalog # PAB15518 Size 100 uL

Applications



Western Blot (Cell lysate)

Western blot on TNF alpha treated PC-12 lysate with Ccl2 polyclonal antibody (Cat # PAB15518).

Specification

Product Description	Rabbit polyclonal antibody raised against synthetic peptide of Ccl2.
Immunogen	A synthetic peptide corresponding to amino acids 30-80 of rat Ccl2.
Host	Rabbit
Reactivity	Human, Mouse, Rat
Specificity	human and rat. Immunogen has 95% homology to mouse MCP1. This antibody is useful for Western blot, where a band is seen ~16 KDa.
Form	Liquid
Recommend Usage	Western Blot (0.5 ug/mL) The optimal working dilution should be determined by the end user.
Storage Buffer	In PBS (30% glycerol, 0.09% sodium azide)
Storage Instruction	Store at 4°C for short term. For long term storage store at -20°C. Aliquot to avoid repeated freezing and thawing.
Note	This product contains sodium azide: a POISONOUS AND HAZARDOUS SUBSTANCE which should be handled by trained staff only.

Applications

- Western Blot (Cell lysate)

Western blot on TNF alpha treated PC-12 lysate with Ccl2 polyclonal antibody (Cat # PAB15518).

Gene Info — Ccl2

Entrez GeneID	24770
Protein Accession#	P14844
Gene Name	Ccl2
Gene Alias	MCP-1, Scya2, Sigje
Gene Description	chemokine (C-C motif) ligand 2
Gene Ontology	Hyperlink
Other Designations	monocyte chemoattractant protein-1 monocyte chemotactic protein 1 small inducible cytokine A2 small inducible gene JE

Publication Reference

- [Molecular cloning of rat monocyte chemoattractant protein-1 \(MCP-1\) and its expression in rat spleen cells and tumor cell lines.](#)

Yoshimura T, Takeya M, Takahashi K.

Biochemical and Biophysical Research Communications 1991 Jan; 174(2):504.

- [The human homolog of the JE gene encodes a monocyte secretory protein.](#)

Rollins BJ, Stier P, Ernst T, Wong GG.

Molecular and Cellular Biology 1989 Nov; 9(11):4687.