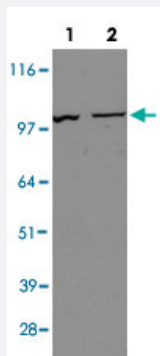


Nbn polyclonal antibody

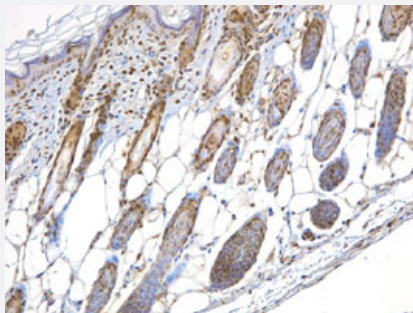
Catalog # PAB15515 Size 100 uL

Applications



Western Blot (Cell lysate)

Western blot of NIH/3T3 (Lane 1) and HeLa whole cell extract (Lane 2) with Nbn polyclonal antibody (Cat # PAB15515).



Immunohistochemistry (Formalin/PFA-fixed paraffin-embedded sections)

Immunohistochemical staining of paraffin-embedded mouse skin with Nbn polyclonal antibody (Cat # PAB15515).

Specification

Product Description	Rabbit polyclonal antibody raised against synthetic peptide of Nbn.
Immunogen	A synthetic peptide corresponding to amino acids 150-200 of mouse Nbn.
Host	Rabbit
Reactivity	Human, Mouse
Specificity	This antibody is useful for Western blot, where a band is seen at approx. 97 KDa.
Form	Liquid

Recommend Usage	Western Blot (0.5 ug/mL) Immunohistochemistry (Formalin/PFA-fixed paraffin-embedded sections) (1:100) The optimal working dilution should be determined by the end user.
Storage Buffer	In PBS (30% glycerol, 0.09% sodium azide)
Storage Instruction	Store at 4°C for short term. For long term storage store at -20°C. Aliquot to avoid repeated freezing and thawing.
Note	This product contains sodium azide: a POISONOUS AND HAZARDOUS SUBSTANCE which should be handled by trained staff only.

Applications

- Western Blot (Cell lysate)

Western blot of NIH/3T3 (Lane 1) and HeLa whole cell extract (Lane 2) with Nbn polyclonal antibody (Cat # PAB15515).

- Immunohistochemistry (Formalin/PFA-fixed paraffin-embedded sections)

Immunohistochemical staining of paraffin-embedded mouse skin with Nbn polyclonal antibody (Cat # PAB15515).

Gene Info — Nbn

Entrez GeneID	27354
----------------------	-----------------------

Protein Accession#	Q9R207
---------------------------	------------------------

Gene Name	Nbn
------------------	-----

Gene Alias	Nbs1
-------------------	------

Gene Description	nibrin
-------------------------	--------

Gene Ontology	Hyperlink
----------------------	---------------------------

Other Designations	OTTMUSP00000004959
---------------------------	--------------------