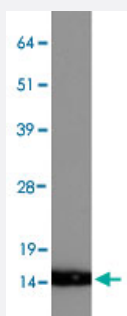


PFN1 polyclonal antibody

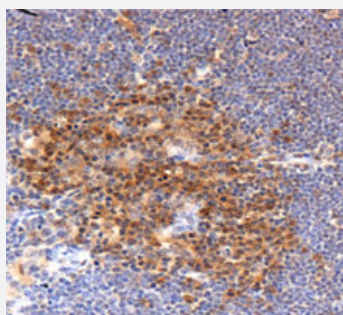
Catalog # PAB15511 Size 100 uL

Applications



Western Blot (Cell lysate)

Western blot of HeLa whole cell extracts with PFN1 polyclonal antibody (Cat # PAB15511).



Immunohistochemistry

Immunohistochemical staining in mouse thymus with PFN1 polyclonal antibody (Cat # PAB15511).

Specification

Product Description	Rabbit polyclonal antibody raised against synthetic peptide of PFN1.
Immunogen	A synthetic peptide corresponding to amino acids 100-140 of human PFN1.
Host	Rabbit
Reactivity	Bovine, Human, Mouse, Rat
Specificity	Immunogen has 100% homology to rat and bovine. This antibody is useful for Western blot, where a band is seen ~14 KDa.
Form	Liquid

Recommend Usage	Western Blot (0.5 ug/mL) Immunohistochemistry (Formalin/PFA-fixed paraffin-embedded sections) (1:100) The optimal working dilution should be determined by the end user.
Storage Buffer	In PBS (30% glycerol, 0.09% sodium azide)
Storage Instruction	Store at 4°C for short term. For long term storage store at -20°C. Aliquot to avoid repeated freezing and thawing.
Note	This product contains sodium azide: a POISONOUS AND HAZARDOUS SUBSTANCE which should be handled by trained staff only.

Applications

- Western Blot (Cell lysate)

Western blot of HeLa whole cell extracts with PFN1 polyclonal antibody (Cat # PAB15511).

- Immunohistochemistry (Formalin/PFA-fixed paraffin-embedded sections)

- Immunohistochemistry

Immunohistochemical staining in mouse thymus with PFN1 polyclonal antibody (Cat # PAB15511).

Gene Info — PFN1

Entrez GeneID	5216
Protein Accession#	P07737
Gene Name	PFN1
Gene Alias	-
Gene Description	profilin 1
Omim ID	176610
Gene Ontology	Hyperlink
Gene Summary	The protein encoded by this gene is a ubiquitous actin monomer-binding protein belonging to the profilin family. It is thought to regulate actin polymerization in response to extracellular signals. Deletion of this gene is associated with Miller-Dieker syndrome. [provided by RefSeq]
Other Designations	-

Pathway

- [Regulation of actin cytoskeleton](#)