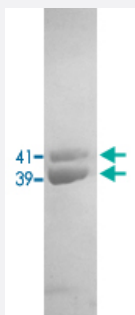


Mu Phage gp44 polyclonal antibody

Catalog # PAB15455

Size 25 ug

Applications



Western Blot

Western blot analysis of Mu phage gp44 protein expressed in Escherichia coli. Using Mu Phage gp44 polyclonal antibody (Cat # PAB15455).

Specification

Product Description Rabbit polyclonal antibody raised against full length recombinant Mu Phage gp44.

Immunogen Recombinant protein corresponding to full length Mu Phage gp44.

Host Rabbit

Form Liquid

Recommend Usage Western Blot (0.5-2 ug/mL)
The optimal working dilution should be determined by the end user.

Storage Buffer In PBS (0.1% proclin, 2% Block Ace)

Storage Instruction Store at 4°C. For long term storage store at -20°C.
Aliquot to avoid repeated freezing and thawing.

Applications

- Western Blot

Western blot analysis of Mu phage gp44 protein expressed in Escherichia coli. Using Mu Phage gp44 polyclonal antibody (Cat # PAB15455).

Publication Reference

- [Bacteriophage Mu genome sequence: analysis and comparison with Mu-like prophages in Haemophilus, Neisseria and Deinococcus.](#)

Morgan GJ, Hatfull GF, Casjens S, Hendrix RW.

Journal of Molecular Biology 2002 Mar; 317(3):337.

- [Morphogenetic structures present in lysates of amber mutants of bacteriophage Mu.](#)

Grundy FJ, Howe MM.

Virology 1985 Jun; 143(2):485.