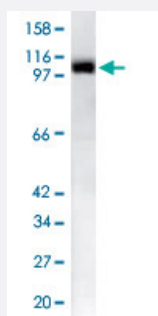


LSD1 polyclonal antibody

Catalog # PAB15450 Size 100 uL

Applications



Western Blot (Cell lysate)

Detection of LSD1 in nuclear extract of 20 ug of HeLa cells probed with LSD1 polyclonal antibody (Cat # PAB15450) at a 1 : 200 dilution. MW of LSD1 is 110kDa.

Specification

Product Description	Rabbit polyclonal antibody raised against full length recombinant LSD1.
Immunogen	Recombinant protein corresponding to full length Lysine Specific Demethylase 1.
Host	Rabbit
Reactivity	Mammals
Form	Liquid
Recommend Usage	Western Blot (1:50-1:200) The optimal working dilution should be determined by the end user.
Storage Buffer	In PBS, pH 7.2 (0.09% sodium azide)
Storage Instruction	Store at 4°C. For long term storage store at -20°C. Aliquot to avoid repeated freezing and thawing.
Note	This product contains sodium azide: a POISONOUS AND HAZARDOUS SUBSTANCE which should be handled by trained staff only.

Applications

- Western Blot (Cell lysate)

Detection of LSD1 in nuclear extract of 20 ug of HeLa cells probed with LSD1 polyclonal antibody (Cat # PAB15450) at a 1 : 200 dilution. MW of LSD1 is 110kDa.

- Immunoprecipitation