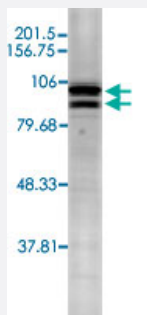


CANX polyclonal antibody

Catalog # PAB15425 Size 200 ug

Applications



Western Blot (Tissue lysate)

Western blot analysis of rat tissue mixed lysate with CANX polyclonal antibody (Cat # PAB15425).

Specification

Product Description	Rabbit polyclonal antibody raised against synthetic peptide of CANX.
Immunogen	A synthetic peptide (conjugated with KLH) corresponding to C-terminus of dog CANX.
Host	Rabbit
Reactivity	Birds, Bovine, Chicken, Dog, Frog, Fruit fly, Guinea pig, Hamster, Human, Monkey, Mouse, Pig, Rabbit, Rat, Sheep
Specificity	Detects ~90KDa. Identical to human, mouse and rat calnexin sequences over these residues.
Form	Liquid
Recommend Usage	Western Blot (1:2000) The optimal working dilution should be determined by the end user.
Storage Buffer	In PBS, pH 7.2 (50% glycerol, 0.09% sodium azide)
Storage Instruction	Store at -20°C. Aliquot to avoid repeated freezing and thawing.
Note	This product contains sodium azide: a POISONOUS AND HAZARDOUS SUBSTANCE which should be handled by trained staff only.

Applications

- Western Blot (Tissue lysate)

Western blot analysis of rat tissue mixed lysate with CANX polyclonal antibody (Cat # PAB15425).

- Immunohistochemistry
- Immunocytochemistry
- Immunoprecipitation
- Flow Cytometry

Gene Info — CANX

Entrez GeneID	403908
---------------	------------------------

Gene Name	CANX
-----------	------

Gene Alias	PP90
------------	------

Gene Description	calnexin
------------------	----------

Gene Ontology	Hyperlink
---------------	---------------------------

Other Designations	-
--------------------	---

Publication Reference

- [Regulation of NAD\(P\)H oxidase by associated protein disulfide isomerase in vascular smooth muscle cells.](#)

Janiszewski M, Lopes LR, Carmo AO, Pedro MA, Brandes RP, Santos CX, Laurindo FR.

The Journal of Biological Chemistry 2005 Dec; 280(49):40813.

- [The Structure of calnexin, an ER chaperone involved in quality control of protein folding.](#)

Schrag JD, Bergeron JJ, Li Y, Borisova S, Hahn M, Thomas DY, Cygler M.

Mol Cell 2001 Sep; 8(3):633.

- [Retention of unassembled components of integral membrane proteins by calnexin.](#)

Rajagopalan S, Xu Y, Brenner MB.

Science 1994 Jan; 263(5145):387.

Application: IEM, IF, Monkey, COS-7 cells