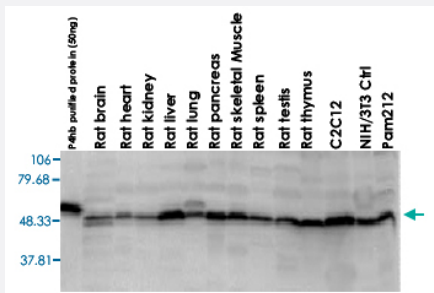


## P4hb polyclonal antibody

Catalog # PAB15416      Size 100 uL

### Applications



#### Western Blot (Tissue lysate)

Western blot analysis from rat tissues lysates with P4hb polyclonal antibody (Cat # PAB15416).

### Specification

<b>Product Description</b>	Rabbit polyclonal antibody raised against synthetic peptide of P4hb.
<b>Immunogen</b>	A synthetic peptide (conjugated with KLH) corresponding to rat P4hb.
<b>Host</b>	Rabbit
<b>Reactivity</b>	Bovine, Dog, Frog, Guinea pig, Hamster, Human, Monkey, Mouse, Pig, Rat, Sheep
<b>Specificity</b>	Detects ~58KDa.
<b>Form</b>	Liquid
<b>Recommend Usage</b>	Western Blot (1:4000) The optimal working dilution should be determined by the end user.
<b>Storage Buffer</b>	In serum
<b>Storage Instruction</b>	Store at -20°C. Aliquot to avoid repeated freezing and thawing.

## Applications

- Western Blot (Tissue lysate)

Western blot analysis from rat tissues lysates with P4hb polyclonal antibody (Cat # PAB15416).

- Immunohistochemistry

- Immunocytochemistry

- Immunoprecipitation

## Gene Info — P4hb

Entrez GeneID	<a href="#">25506</a>
---------------	-----------------------

Gene Name	P4hb
-----------	------

Gene Alias	PDIR
------------	------

Gene Description	prolyl 4-hydroxylase, beta polypeptide
------------------	--

Gene Ontology	<a href="#">Hyperlink</a>
---------------	---------------------------

Gene Summary	O
--------------	---

Other Designations	Protein disulfide isomerase (Prolyl 4-hydroxylase, beta polypeptide)
--------------------	--

## Publication Reference

- [Protein disulfide isomerase is cleaved by caspase-3 and -7 during apoptosis.](#)

Na KS, Park BC, Jang M, Cho S, Lee do H, Kang S, Lee CK, Bae KH, Park SG.

Molecules and Cells 2007 Oct; 24(2):261.

Application: IF, WB, Human, Bosc23, HL-60, MCF-7 cells

- [BiP and PDI cooperate in the oxidative folding of antibodies in vitro.](#)

Mayer M, Kies U, Kammermeier R, Buchner J.

The Journal of Biological Chemistry 2000 Sep; 275(38):29421.