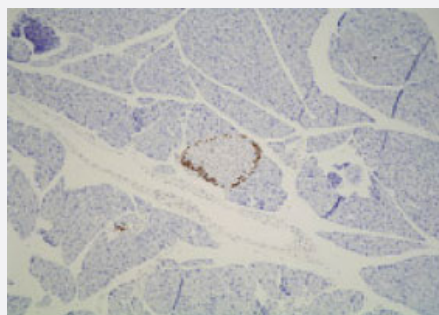


# Zmat4 polyclonal antibody

Catalog # PAB14876

Size 25 ug

## Applications



### Immunohistochemistry (Formalin/PFA-fixed paraffin-embedded sections)

Immunohistochemistry (Formalin/PFA-fixed paraffin-embedded sections) of mouse pancreas with Zmat4 polyclonal antibody (Cat # PAB14876).

## Specification

**Product Description** Rabbit polyclonal antibody raised against synthetic peptide of Zmat4.

**Immunogen** A synthetic peptide corresponding to mouse Zmat4.

**Host** Rabbit

**Reactivity** Mouse

**Form** Liquid

**Recommend Usage** Immunohistochemistry (5-10 ug/mL)  
The optimal working dilution should be determined by the end user.

**Storage Buffer** In PBS (0.1% proclin, 2% Block Ace)

**Storage Instruction** Store at 4°C. For long term storage store at -20°C.  
Aliquot to avoid repeated freezing and thawing.

## Applications

- Immunohistochemistry (Formalin/PFA-fixed paraffin-embedded sections)

Immunohistochemistry (Formalin/PFA-fixed paraffin-embedded sections) of mouse pancreas with Zmat4 polyclonal antibody (Cat # PAB14876).

## Gene Info — Zmat4

Entrez GeneID	<a href="#">320158</a>
Gene Name	Zmat4
Gene Alias	9630048M01Rik, MGC90808
Gene Description	zinc finger, matrin type 4
Gene Ontology	<a href="#">Hyperlink</a>
Gene Summary	O
Other Designations	-