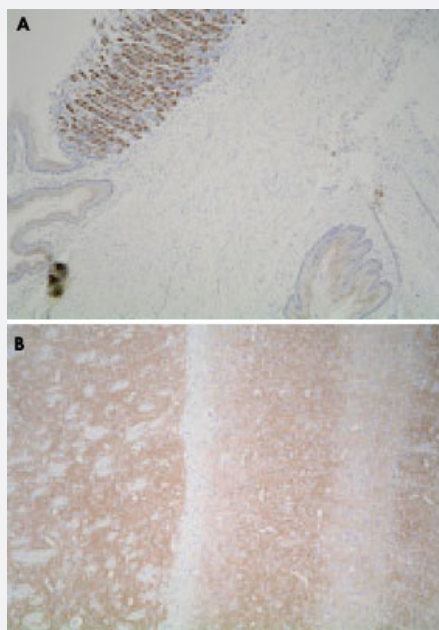


Leprotl1 polyclonal antibody

Catalog # PAB14874

Size 25 ug

Applications



Immunohistochemistry (Formalin/PFA-fixed paraffin-embedded sections)

Immunohistochemistry (Formalin/PFA-fixed paraffin-embedded sections) of mouse stomach (A) and mouse cerebrum (B) with Leprotl1 polyclonal antibody (Cat # PAB14874).

Specification

Product Description	Rabbit polyclonal antibody raised against synthetic peptide of Leprotl1.
Immunogen	A synthetic peptide corresponding to mouse Leprotl1.
Host	Rabbit
Reactivity	Mouse
Form	Liquid
Recommend Usage	Immunohistochemistry (5-10 ug/mL) The optimal working dilution should be determined by the end user.
Storage Buffer	In PBS (0.1% proclin, 2% Block Ace)

Storage Instruction

Store at 4°C. For long term storage store at -20°C.
Aliquot to avoid repeated freezing and thawing.

Applications

- Immunohistochemistry (Formalin/PFA-fixed paraffin-embedded sections)

Immunohistochemistry (Formalin/PFA-fixed paraffin-embedded sections) of mouse stomach (A) and mouse cerebrum (B) with Leprotl1 polyclonal antibody (Cat # PAB14874).

Gene Info — Leprotl1

Entrez GeneID [68192](#)

Gene Name Leprotl1

Gene Alias 1110067H13Rik, 1520402O14Rik, AI854296

Gene Description leptin receptor overlapping transcript-like 1

Gene Ontology [Hyperlink](#)

Other Designations -

Publication Reference

- [Cloning and characterization of a novel human leptin receptor overlapping transcript-like 1 gene \(LEPROTL1\).](#)

Huang Y, Ying K, Xie Y, Zhou Z, Wang W, Tang R, Zhao W, Zhao S, Wu H, Gu S, Mao Y.

Biochimica et Biophysica Acta 2001 Jan; 1517(2):327.