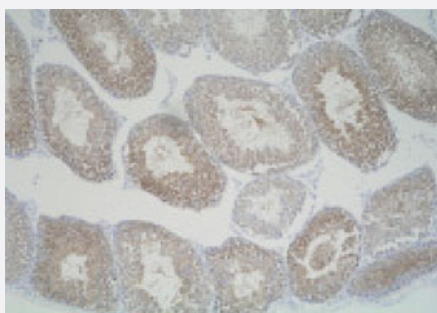


# Slc25a19 polyclonal antibody

Catalog # PAB14873

Size 25 ug

## Applications



### Immunohistochemistry (Formalin/PFA-fixed paraffin-embedded sections)

Immunohistochemistry (Formalin/PFA-fixed paraffin-embedded sections) of mouse testis with Slc25a19 polyclonal antibody (Cat # PAB14873).

## Specification

**Product Description** Rabbit polyclonal antibody raised against synthetic peptide of Slc25a19.

**Immunogen** A synthetic peptide corresponding to mouse Slc25a19.

**Host** Rabbit

**Reactivity** Mouse

**Form** Liquid

**Recommend Usage** Immunohistochemistry (5-10 ug/mL)  
The optimal working dilution should be determined by the end user.

**Storage Buffer** In PBS (0.1% proclin, 2% Block Ace)

**Storage Instruction** Store at 4°C. For long term storage store at -20°C.  
Aliquot to avoid repeated freezing and thawing.

## Applications

- Immunohistochemistry (Formalin/PFA-fixed paraffin-embedded sections)

Immunohistochemistry (Formalin/PFA-fixed paraffin-embedded sections) of mouse testis with Slc25a19 polyclonal antibody (Cat # PAB14873).

## Gene Info — Slc25a19

Entrez GeneID	<a href="#">67283</a>
Gene Name	Slc25a19
Gene Alias	2900089E13Rik, DNC, MUP1, TPC
Gene Description	solute carrier family 25 (mitochondrial thiamine pyrophosphate carrier), member 19
Gene Ontology	<a href="#">Hyperlink</a>
Gene Summary	O
Other Designations	OTTMUSP00000003574 solute carrier family 25 (mitochondrial deoxynucleotide carrier), member 19 solute carrier family 25, member 19

## Publication Reference

- [Knockout of Slc25a19 causes mitochondrial thiamine pyrophosphate depletion, embryonic lethality, CNS malformations, and anemia.](#)

Lindhurst MJ, Fiermonte G, Song S, Struys E, De Leonardis F, Schwartzberg PL, Chen A, Castegna A, Verhoeven N, Mathews CK, Palmieri F, Biesecker LG.

PNAS 2006 Oct; 103(43):15927.