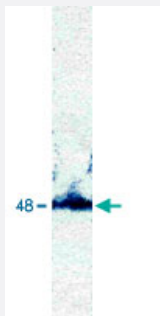


# PAX8 polyclonal antibody

Catalog # PAB14858

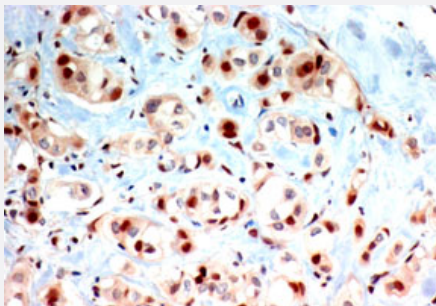
Size 100 ug

## Applications



### Western Blot (Cell lysate)

The cell lysate derived from Jurkat was immunoblotted by PAX8 polyclonal antibody (Cat # PAB14858) at 1 : 500. An immunoreactive band is observed at 48 kDa. This band is depleted by immunizing peptide.



### Immunohistochemistry (Formalin/PFA-fixed paraffin-embedded sections)

The human breast carcinoma stained with PAX8 polyclonal antibody (Cat # PAB14858) at 1 : 250. The formalin-fixed, paraffin-embedded sections need 15 minutes heat-induced epitope retrieval in 10 mM citrate buffer, pH 6.0, and 30 minutes incubation at room temperature with the primary antibody.

## Specification

|                      |  |
|----------------------|--|
| Product Description  | Rabbit polyclonal antibody raised against synthetic peptide of PAX8. |
| Immunogen            | A synthetic peptide corresponding to internal domain of human PAX8.  |
| Host                 | Rabbit   |
| Theoretical MW (kDa) | 48   |
| Reactivity           | Human, Mouse, Rat  |
| Specificity          | This antibody recognizes ~48 KDa of human PAX8.                      |
| Form                 | Liquid   |

|                     |   |
|---------------------|---|
| Purification        | Affinity purification   |
| Isotype             | IgG   |
| Recommend Usage     | Western Blot (0.1-1 ug/mL)<br>ELISA (0.01-0.1 ug/mL)<br>Immunoprecipitation (2-5 ug/mL)<br>Immunohistochemistry (2-5 ug/mL)<br>The optimal working dilution should be determined by the end user. |
| Storage Buffer      | In PBS, pH 7.2 (BSA, 10% Proclin300)  |
| Storage Instruction | Store at 4°C. For long term storage store at -20°C or lower.<br>Aliquot to avoid repeated freezing and thawing.   |

## Applications

- Western Blot (Cell lysate)

The cell lysate derived from Jurkat was immunoblotted by PAX8 polyclonal antibody (Cat # PAB14858) at 1 : 500. An immunoreactive band is observed at 48 kDa. This band is depleted by immunizing peptide.

- Immunohistochemistry (Formalin/PFA-fixed paraffin-embedded sections)

The human breast carcinoma stained with PAX8 polyclonal antibody (Cat # PAB14858) at 1 : 250. The formalin-fixed, paraffin-embedded sections need 15 minutes heat-induced epitope retrieval in 10 mM citrate buffer, pH 6.0, and 30 minutes incubation at room temperature with the primary antibody.

## Gene Info — PAX8

|                  |   |
|------------------|---|
| Entrez GeneID    | <a href="#">7849</a>                          |
| Gene Name        | PAX8  |
| Gene Alias       | -   |
| Gene Description | paired box 8                                  |
| Omim ID          | <a href="#">167415</a> <a href="#">218700</a> |
| Gene Ontology    | <a href="#">Hyperlink</a>                     |

**Gene Summary**

This gene encodes a member of the paired box (PAX) family of transcription factors. Members of this gene family typically encode proteins that contain a paired box domain, an octapeptide, and a paired-type homeodomain. This nuclear protein is involved in thyroid follicular cell development and expression of thyroid-specific genes. Mutations in this gene have been associated with thyroid dysgenesis, thyroid follicular carcinomas and atypical follicular thyroid adenomas. Alternatively spliced transcript variants encoding different isoforms have been described. [provided by RefSeq]

**Other Designations**

OTTHUMP00000158659|OTTHUMP00000158660|paired domain gene 8

**Pathway**

- [Pathways in cancer](#)
- [Thyroid cancer](#)

**Disease**

- [Cleft Lip](#)
- [Cleft Palate](#)
- [Congenital Hypothyroidism](#)
- [Genetic Predisposition to Disease](#)
- [Thyroid Neoplasms](#)
- [Tobacco Use Disorder](#)