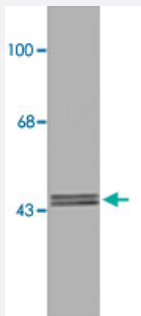


Gabrg2 polyclonal antibody

Catalog # PAB14537

Size 50 uL

Applications



Western Blot (Tissue lysate)

Western blot of 10 ug of rat hippocampal lysate showing immunolabeling of the ~46 kDa gamma2-subunit of the Gabrg2.

Specification

Product Description Rabbit polyclonal antibody raised against synthetic peptide of Gabrg2.

Immunogen A synthetic peptide corresponding to rat Gabrg2.

Host Rabbit

Theoretical MW (kDa) 46

Reactivity Rat

Form Liquid

Recommend Usage Western Blot (1:1000)
Immunohistochemistry (1:400)
The optimal working dilution should be determined by the end user.

Storage Buffer In serum

Storage Instruction Store at -20°C.
Aliquot to avoid repeated freezing and thawing.

Applications

- Western Blot (Tissue lysate)

Western blot of 10 ug of rat hippocampal lysate showing immunolabeling of the ~46 kDa gamma2-subunit of the Gabrg2.

- Immunohistochemistry

Gene Info — Gabrg2

Entrez GeneID	29709
Protein Accession#	P18508
Gene Name	Gabrg2
Gene Alias	-
Gene Description	gamma-aminobutyric acid (GABA) A receptor, gamma 2
Gene Ontology	Hyperlink
Gene Summary	O
Other Designations	gamma-aminobutyric acid A receptor, gamma 2 gamma-aminobutyric acid (GABA-A) receptor, subunit gamma 2 gamma-aminobutyric acid A receptor, gamma 2