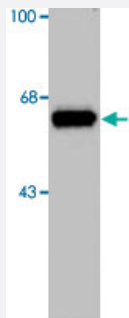


# Th polyclonal antibody

Catalog # PAB14535      Size 100 uL

## Applications



### Western Blot (Tissue lysate)

Western blot of 10 ug of rat caudate lysate showing specific immunolabeling of the ~60 kDa Th protein.

## Specification

<b>Product Description</b>	Rabbit polyclonal antibody raised against native Th.
<b>Immunogen</b>	Native purified Th from rat pheochromocytoma.
<b>Host</b>	Rabbit
<b>Theoretical MW (kDa)</b>	60
<b>Reactivity</b>	Rat
<b>Form</b>	Liquid
<b>Purification</b>	Affinity purification
<b>Recommend Usage</b>	Western Blot (1:1000) Immunofluorescence (1:1000) The optimal working dilution should be determined by the end user.
<b>Storage Buffer</b>	In serum
<b>Storage Instruction</b>	Store at -20°C. Aliquot to avoid repeated freezing and thawing.

## Applications

- Western Blot (Tissue lysate)

Western blot of 10 ug of rat caudate lysate showing specific immunolabeling of the ~60 kDa Th protein.

- Immunohistochemistry
- Immunofluorescence

## Gene Info — Th

Entrez GeneID	<a href="#">25085</a>
---------------	-----------------------

Protein Accession#	<a href="#">P04177</a>
--------------------	------------------------

Gene Name	Th
-----------	----

Gene Alias	The
------------	-----

Gene Description	tyrosine hydroxylase
------------------	----------------------

Gene Ontology	<a href="#">Hyperlink</a>
---------------	---------------------------

Other Designations	-
--------------------	---