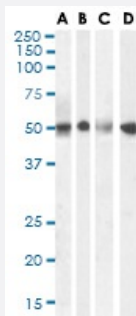


SEPT6 polyclonal antibody

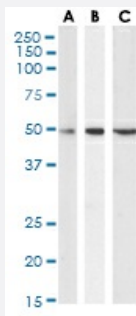
Catalog # PAB14390 Size 100 ug

Applications



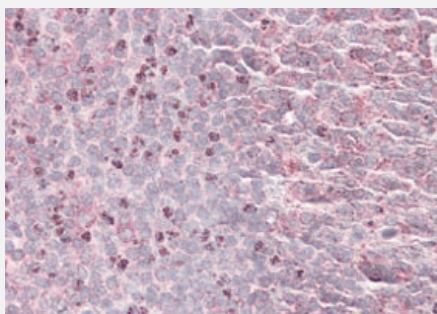
Western Blot (Tissue lysate)

SEPT6 polyclonal antibody (Cat # PAB14390) (1 µg/mL) staining of Human Testis (A), (0.1 µg/mL) Duodenum (B), (0.5 µg/mL) Kidney (C) and (0.3 µg/mL) Tonsil (D) lysate (35 µg protein in RIPA buffer). Detected by chemiluminescence.



Western Blot (Cell lysate)

SEPT6 polyclonal antibody (Cat # PAB14390) (0.1 µg/mL) staining of Daudi (A), Jurkat (B) and MOLT4 (C) cell lysate (35 µg protein in RIPA buffer). Detected by chemiluminescence.



Immunohistochemistry (Formalin/PFA-fixed paraffin-embedded sections)

Immunohistochemical staining of human tonsil with SEPT6 polyclonal antibody (Cat # PAB14390) (3.8 ug/mL). Steamed antigen retrieval with citrate buffer pH 6, AP-staining.

Specification

Product Description

Goat polyclonal antibody raised against synthetic peptide of SEPT6.

Immunogen

A synthetic peptide corresponding to human SEPT6.

Sequence	C-DEVNAFKQRKTA
Host	Goat
Theoretical MW (kDa)	48.9, 49.7, 49.2
Reactivity	Human
Specificity	Approx 50 KDa band observed in human testis, thyroid gland and MOLT 4 cell lysates (calculated M W of 49.7 KDa according to NP_055944.2).
Form	Liquid
Purification	Antigen affinity purification
Concentration	0.5 mg/mL
Recommend Usage	ELISA (1:4000) Immunohistochemistry (3-5 µg/mL) Western Blot (0.1-1 µg/mL) The optimal working dilution should be determined by the end user.
Storage Buffer	In Tris saline, pH 7.3 (0.5% BSA, 0.02% sodium azide)
Storage Instruction	Store at -20°C. Aliquot to avoid repeated freezing and thawing.
Note	This product contains sodium azide: a POISONOUS AND HAZARDOUS SUBSTANCE which should be handled by trained staff only.

Applications

- Western Blot (Tissue lysate)

SEPT6 polyclonal antibody (Cat # PAB14390) (1 µg/mL) staining of Human Testis (A), (0.1 µg/mL) Duodenum (B), (0.5 µg/mL) Kidney (C) and (0.3 µg/mL) Tonsil (D) lysate (35 µg protein in RIPA buffer). Detected by chemiluminescence.

- Western Blot (Cell lysate)

SEPT6 polyclonal antibody (Cat # PAB14390) (0.1 µg/mL) staining of Daudi (A), Jurkat (B) and MOLT4 (C) cell lysate (35 µg protein in RIPA buffer). Detected by chemiluminescence.

- Immunohistochemistry (Formalin/PFA-fixed paraffin-embedded sections)

Immunohistochemical staining of human tonsil with SEPT6 polyclonal antibody (Cat # PAB14390) (3.8 µg/mL). Steamed antigen retrieval with citrate buffer pH 6, AP-staining.

- Enzyme-linked Immunoabsorbent Assay

Gene Info — SEPT6

Entrez GeneID [23157](#)**Protein Accession#** [NP_665798.1;NP_055944.2;NP_665801.1](#)**Gene Name** SEPT6**Gene Alias** KIAA0128, MGC16619, MGC20339, SEP2, SEPT2**Gene Description** septin 6**Omim ID** [300683](#)**Gene Ontology** [Hyperlink](#)

Gene Summary This gene is a member of the septin family of GTPases. Members of this family are required for cytokinesis. One version of pediatric acute myeloid leukemia is the result of a reciprocal translocation between chromosomes 11 and X, with the breakpoint associated with the genes encoding the mixed-lineage leukemia and septin 2 proteins. This gene encodes four transcript variants encoding three distinct isoforms. An additional transcript variant has been identified, but its biological validity has not been determined. [provided by RefSeq]

Other Designations OTTHUMP00000023916|OTTHUMP00000023918|OTTHUMP00000023921|septin 2

Publication Reference

- [Septins regulate actin organization and cell-cycle arrest through nuclear accumulation of NCK mediated by SOCS7.](#)

Kremer BE, Adang LA, Macara IG.

Cell 2007 Sep; 130(5):837.