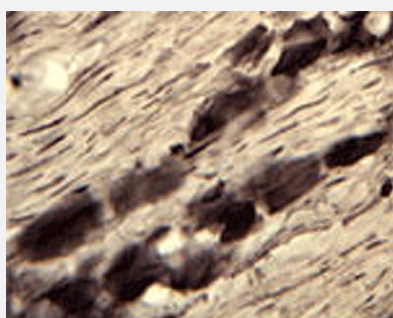


Atp13a2 polyclonal antibody

Catalog # PAB14317 Size 100 uL

Applications



Immunohistochemistry (Frozen sections)

Immunohistochemical staining on rat trigeminal nerve (free floating cryo section) using Atp13a2 polyclonal antibody (Cat # PAB14317) at a dilution of 1 : 2000.

Specification

Product Description	Rabbit polyclonal antibody raised against synthetic peptide of Atp13a2.
Immunogen	A synthetic peptide (conjugated with KLH) corresponding to amino acids 147-161 of mouse Atp13a2.
Sequence	ELHRQEEAKQVLRYY
Host	Rabbit
Reactivity	Mouse, Rat
Specificity	Immunohistochemistry shows specific staining for ATPase.
Form	Lyophilized
Recommend Usage	Immunohistochemistry (1:500-1:2000) The optimal working dilution should be determined by the end user.
Storage Buffer	Lyophilized from PBS
Storage Instruction	Store at 4°C on dry atmosphere. After reconstitution with deionized water, store at -20°C or lower. Aliquot to avoid repeated freezing and thawing.

Applications

- Immunohistochemistry (Frozen sections)

Immunohistochemical staining on rat trigeminal nerve (free floating cryo section) using Atp13a2 polyclonal antibody (Cat # PAB14317) at a dilution of 1 : 2000.

Gene Info — Atp13a2

Entrez GeneID	74772
---------------	-----------------------

Gene Name	Atp13a2
-----------	---------

Gene Alias	1110012E06Rik, AA589443
------------	-------------------------

Gene Description	ATPase type 13A2
------------------	------------------

Gene Ontology	Hyperlink
---------------	---------------------------

Other Designations	OTTMUSP00000010718
--------------------	--------------------