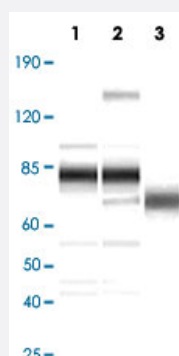


KSHV ORF8 polyclonal antibody

Catalog # PAB14292 Size 100 ug

Applications



Western Blot

Western blot analysis using KSHV ORF8 polyclonal antibody (Cat # PAB14292) to KSHV ORF8 against uninduced BCBL-1 (Lane 1); TPA-induced BCBL-1 (Lane 2) and purified virion (Lane 3).

Specification

| | |
|----------------------------|--|
| Product Description | Rabbit polyclonal antibody raised against synthetic peptide of Kaposi's sarcoma-associated herpes virus (KSHV) ORF8. |
| Immunogen | A synthetic peptide (conjugated with KLH) corresponding to KSHV ORF8. |
| Host | Rabbit |
| Reactivity | Human |
| Form | Liquid |
| Recommend Usage | Western Blot (1:500-1:1000) The optimal working dilution should be determined by the end user. |
| Storage Buffer | In serum |
| Storage Instruction | Store at -20°C. Aliquot to avoid repeated freezing and thawing. |

Applications

- Western Blot

Western blot analysis using KSHV ORF8 polyclonal antibody (Cat # PAB14292) to KSHV ORF8 against uninduced BCBL-1 (Lane 1); TPA-induced BCBL-1 (Lane 2) and purified virion (Lane 3).

Publication Reference

- [Human herpesvirus 8 envelope glycoprotein B mediates cell adhesion via its RGD sequence.](#)

Wang FZ, Akula SM, Sharma-Walia N, Zeng L, Chandran B.

Journal of Virology 2003 Mar; 77(5):3131.

- [Nucleotide sequence of the Kaposi sarcoma-associated herpesvirus \(HHV8\).](#)

Russo JJ, Bohenzky RA, Chien MC, Chen J, Yan M, Maddalena D, Parry JP, Peruzzi D, Edelman IS, Chang Y, Moore PS.

PNAS 1996 Dec; 93(25):14862.