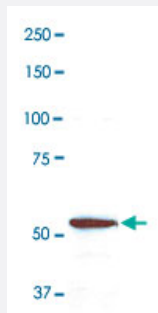


CORO1A polyclonal antibody

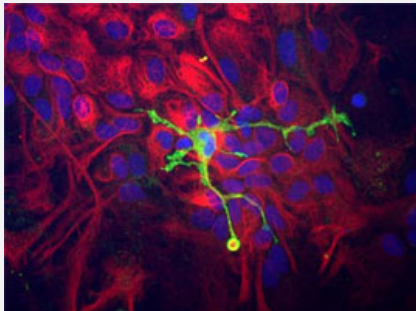
Catalog # PAB14169 Size 100 uL

Applications



Western Blot (Cell lysate)

Western blot of HL-60 cell extracts stained with CORO1A polyclonal antibody (Cat # PAB14169), at dilution of 1 : 10,000. A prominent band running with an apparent SDS-PAGE molecular weight of ~ 57 KDa corresponds to CORO1A. Numbers represent positions of molecular weight standards in KDa.



Immunofluorescence

Immunocytochemistry of a mixed neuron/glial culture from newborn rat brain stained with CORO1A polyclonal antibody (Cat # PAB14169) (green) at a dilution of 1 : 10,000 and Chicken Vimentin polyclonal antibody (1 : 5,000). Blue is nuclear DNA counter stain.

Glial cells and fibroblasts stain with Vimentin, while microglia alone stain strongly and specifically for CORO1A, which can therefore be used as a robust marker of this important cell type.

Specification

Product Description	Rabbit polyclonal antibody raised against recombinant CORO1A.
Immunogen	Recombinant protein corresponding to human CORO1A.
Host	Rabbit
Theoretical MW (kDa)	57
Reactivity	Human, Mammals
Form	Liquid

Recommend Usage	Western Blot (1:10000) Immunofluorescence (1:1000) The optimal working dilution should be determined by the end user.
Storage Buffer	In serum (5 mM sodium azide)
Storage Instruction	Store at -20°C. Aliquot to avoid repeated freezing and thawing.
Note	This product contains sodium azide: a POISONOUS AND HAZARDOUS SUBSTANCE which should be handled by trained staff only.

Applications

- Western Blot (Cell lysate)

Western blot of HL-60 cell extracts stained with CORO1A polyclonal antibody (Cat # PAB14169), at dilution of 1 : 10,000. A prominent band running with an apparent SDS-PAGE molecular weight of ~ 57 KDa corresponds to CORO1A. Numbers represent positions of molecular weight standards in KDa.

- Immunohistochemistry

- Immunofluorescence

Immunocytochemistry of a mixed neuron/glial culture from newborn rat brain stained with CORO1A polyclonal antibody (Cat # PAB14169) (green) at a dilution of 1 : 10,000 and Chicken Vimentin polyclonal antibody (1 : 5,000).

Blue is nuclear DNA counter stain.

Glial cells and fibroblasts stain with Vimentin, while microglia alone stain strongly and specifically for CORO1A, which can therefore be used as a robust marker of this important cell type.

- Enzyme-linked Immunoabsorbent Assay

Gene Info — CORO1A

Entrez GeneID	11151
Protein Accession#	AK314714
Gene Name	CORO1A
Gene Alias	CLABP, CLIPINA, FLJ41407, HCORO1, MGC117380, TACO, p57
Gene Description	coronin, actin binding protein, 1A
Omim ID	605000
Gene Ontology	Hyperlink

Gene Summary	actin binding protein
Other Designations	coronin, actin-binding protein, 1A coronin, actin-binding, 1A coronin-1

Publication Reference

- [Actin-binding proteins coronin-1a and IBA-1 are effective microglial markers for immunohistochemistry.](#)
Ahmed Z, Shaw G, Sharma VP, Yang C, McGowan E, Dickson DW.
The Journal of Histochemistry and Cytochemistry 2007 Jul; 55(7):687.

Application: IF, IHC, WB, Human, Mouse, Brain, non-neural tissues, HL-60 cells
- [The crystal structure of murine coronin-1: a regulator of actin cytoskeletal dynamics in lymphocytes.](#)
Appleton BA, Wu P, Wiesmann C.
Structure 2006 Jan; 14(1):87.
- [Coronin proteins as multifunctional regulators of the cytoskeleton and membrane trafficking.](#)
Rybakin V, Clemen CS.
Bioessays 2005 Jun; 27(6):625.

Application: IHC, WB, Human, Bone marrow, Lymph nodes, Peripheral leukocytes, Spleen, Thymus