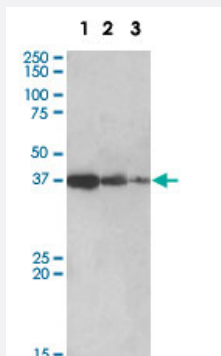


# PPP2R4 polyclonal antibody

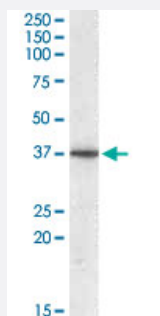
Catalog # PAB14148      Size 100 ug

## Applications



### Western Blot (Tissue lysate)

PPP2R4 polyclonal antibody (Cat # PAB14148) (0.5 ug/mL) staining of human liver lysate (lane 1), mouse liver (lane 2) and rat liver (lane 3) (35ug protein in RIPA buffer). Primary incubation was 1 hour. Detected by chemiluminescence.



### Western Blot (Tissue lysate)

PPP2R4 polyclonal antibody (Cat # PAB14148) (0.5 ug/mL) staining of human liver lysate (35 ug protein in RIPA buffer). Primary incubation was 1 hour. Detected by chemiluminescence.

## Specification

<b>Product Description</b>	Goat polyclonal antibody raised against synthetic peptide of PPP2R4.
<b>Immunogen</b>	A synthetic peptide corresponding to human PPP2R4.
<b>Sequence</b>	C-GSLLPIHPVTSG
<b>Host</b>	Goat
<b>Theoretical MW (kDa)</b>	40.7, 36.8, 31.9
<b>Reactivity</b>	Human, Rat

Specificity	Approx 37 KDa band observed in lysates of human liver tissue and HepG2 cell line (calculated MW of 36.8 KDa according to NP_066954.2).
Form	Liquid
Purification	Antigen affinity purification
Concentration	0.5 mg/mL
Recommend Usage	ELISA (1:32000) Western Blot (0.5-2 ug/mL) The optimal working dilution should be determined by the end user.
Storage Buffer	In Tris saline, pH 7.3 (0.5% BSA, 0.02% sodium azide)
Storage Instruction	Store at -20°C. Aliquot to avoid repeated freezing and thawing.
Note	This product contains sodium azide: a POISONOUS AND HAZARDOUS SUBSTANCE which should be handled by trained staff only.

## Applications

- Western Blot (Tissue lysate)

PPP2R4 polyclonal antibody (Cat # PAB14148) (0.5 ug/mL) staining of human liver lysate (lane 1), mouse liver (lane 2) and rat liver (lane 3) (35ug protein in RIPA buffer). Primary incubation was 1 hour. Detected by chemiluminescence.

- Western Blot (Tissue lysate)

PPP2R4 polyclonal antibody (Cat # PAB14148) (0.5 ug/mL) staining of human liver lysate (35 ug protein in RIPA buffer). Primary incubation was 1 hour. Detected by chemiluminescence.

- Enzyme-linked Immunoabsorbent Assay

## Gene Info — PPP2R4

Entrez GeneID	<a href="#">5524</a>
Protein Accession#	<a href="#">NP_821068.1</a> ; <a href="#">NP_066954.2</a> ; <a href="#">NP_821070.1</a>
Gene Name	PPP2R4
Gene Alias	MGC2184, PP2A, PR53, PTPA
Gene Description	protein phosphatase 2A activator, regulatory subunit 4

Omim ID [600756](#)

Gene Ontology [Hyperlink](#)

**Gene Summary**

Protein phosphatase 2A is one of the four major Ser/Thr phosphatases and is implicated in the negative control of cell growth and division. Protein phosphatase 2A holoenzymes are heterotrimeric proteins composed of a structural subunit A, a catalytic subunit C, and a regulatory subunit B. The regulatory subunit is encoded by a diverse set of genes that have been grouped into the B/PR55, B'/PR61, and B''/PR72 families. These different regulatory subunits confer distinct enzymatic specificities and intracellular localizations to the holoenzyme. The product of this gene belongs to the B' family. This gene encodes a specific phosphotyrosyl phosphatase activator of the dimeric form of protein phosphatase 2A. Alternative splicing results in multiple transcript variants encoding different isoforms. [provided by RefSeq]

**Other Designations**

OTTHUMP00000022333|PP2A phosphatase activator|PP2A, subunit B'|phosphotyrosyl phosphatase activator|protein phosphatase 2A, regulatory subunit B'|protein phosphatase 2A, regulatory subunit B' (PR 53)

## Publication Reference

- [Protein phosphatase 2A negatively regulates integrin alpha\(IIb\)beta\(3\) signaling.](#)

Gushiken FC, Patel V, Liu Y, Pradhan S, Bergeron AL, Peng Y, Vijayan KV.

The Journal of Biological Chemistry 2008 May; 283(19):12862.

Application: IP, WB, Human, HEK 293 cells, platelets

## Disease

- [Kidney Failure](#)