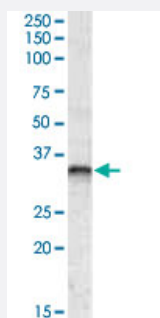


JUNB polyclonal antibody

Catalog # PAB14147 Size 100 ug

Applications



Western Blot (Tissue lysate)

JUNB polyclonal antibody (Cat # PAB14147) (0.3 ug/mL) staining of human breast cancer lysate (35 ug protein in RIPA buffer). Primary incubation was 1 hour. Detected by chemiluminescence.

Specification

| | |
|-----------------------------|--|
| Product Description | Goat polyclonal antibody raised against synthetic peptide of JUNB. |
| Immunogen | A synthetic peptide corresponding to human JUNB. |
| Sequence | C-TLKAENAGLSSTAG |
| Host | Goat |
| Theoretical MW (kDa) | 35.9 |
| Reactivity | Human |
| Specificity | Approx 35 KDa band observed in human breast cancer lysates (calculated MW of 35.9 KDa according to NP_002220.1). |
| Form | Liquid |
| Purification | Antigen affinity purification |
| Concentration | 0.5 mg/mL |

| | |
|---------------------|--|
| Recommend Usage | ELISA (1:64000) Western Blot (0.3-1 ug/mL) The optimal working dilution should be determined by the end user. |
| Storage Buffer | In Tris saline, pH 7.3 (0.5% BSA, 0.02% sodium azide) |
| Storage Instruction | Store at -20°C. Aliquot to avoid repeated freezing and thawing. |
| Note | This product contains sodium azide: a POISONOUS AND HAZARDOUS SUBSTANCE which should be handled by trained staff only. |

Applications

- Western Blot (Tissue lysate)

JUNB polyclonal antibody (Cat # PAB14147) (0.3 ug/mL) staining of human breast cancer lysate (35 ug protein in RIPA buffer). Primary incubation was 1 hour. Detected by chemiluminescence.

- Enzyme-linked Immunoabsorbent Assay

Gene Info — JUNB

| | |
|--------------------|-----------------------------|
| Entrez GeneID | 3726 |
| Protein Accession# | NP_002220.1 |
| Gene Name | JUNB |
| Gene Alias | AP-1 |
| Gene Description | jun B proto-oncogene |
| Omim ID | 165161 |
| Gene Ontology | Hyperlink |
| Other Designations | activator protein 1 |

Publication Reference

- [Oxidative stress, telomere length and biomarkers of physical aging in a cohort aged 79 years from the 1932 Scottish Mental Survey.](#)

Starr JM, Shiels PG, Harris SE, Pattie A, Pearce MS, Relton CL, Deary IJ.

Mechanisms of Ageing and Development 2008 Dec; 129(12):745.

- [Function of JunB in transient amplifying cell senescence and progression of human prostate cancer.](#)

Konishi N, Shimada K, Nakamura M, Ishida E, Ota I, Tanaka N, Fujimoto K.

Clinical Cancer Research 2008 Jul; 14(14):4408.

Application: WB-Ce, Human, Normal transient amplifying cells (TAC) fractions from human prostatic tissue

Disease

- [Alzheimer disease](#)
- [Cognition](#)