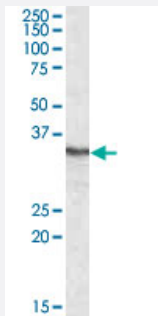


# PPP4C polyclonal antibody

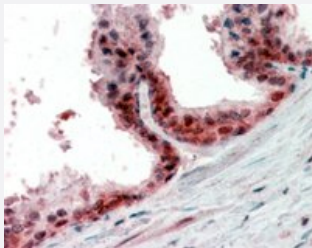
Catalog # PAB14146      Size 100 ug

## Applications



### Western Blot (Cell lysate)

PPP4C polyclonal antibody (Cat # PAB14146) (0.3 ug/mL) staining of HEK293 lysate (35 ug protein in RIPA buffer). Primary incubation was 1 hour. Detected by chemiluminescence.



### Immunohistochemistry (Formalin/PFA-fixed paraffin-embedded sections)

PPP4C polyclonal antibody (Cat # PAB14146) (2.5 ug/mL) staining of paraffin embedded human prostate. Steamed antigen retrieval with citrate buffer pH 6, AP-staining.

## Specification

<b>Product Description</b>	Goat polyclonal antibody raised against synthetic peptide of PPP4C.
<b>Immunogen</b>	A synthetic peptide corresponding to human PPP4C.
<b>Sequence</b>	C-PQETRGIPSKKP
<b>Host</b>	Goat
<b>Theoretical MW (kDa)</b>	35.1
<b>Reactivity</b>	Human

Specificity	Approx 35 KDa band observed in HEK293, A-431 and HeLa lysates (calculated MW of 35.1 KDa according to NP_002711.1).
Form	Liquid
Purification	Antigen affinity purification
Concentration	0.5 mg/mL
Recommend Usage	ELISA (1:16000) Western Blot (0.1-0.3 ug/mL) Immunohistochemistry (Formalin/PFA-fixed paraffin-embedded sections) (2-4 ug/mL) The optimal working dilution should be determined by the end user.
Storage Buffer	In Tris saline, pH 7.3 (0.5% BSA, 0.02% sodium azide)
Storage Instruction	Store at -20°C. Aliquot to avoid repeated freezing and thawing.
Note	This product contains sodium azide: a POISONOUS AND HAZARDOUS SUBSTANCE which should be handled by trained staff only.

## Applications

- Western Blot (Cell lysate)

PPP4C polyclonal antibody (Cat # PAB14146) (0.3 ug/mL) staining of HEK293 lysate (35 ug protein in RIPA buffer). Primary incubation was 1 hour. Detected by chemiluminescence.

- Immunohistochemistry (Formalin/PFA-fixed paraffin-embedded sections)

PPP4C polyclonal antibody (Cat # PAB14146) (2.5 ug/mL) staining of paraffin embedded human prostate. Steamed antigen retrieval with citrate buffer pH 6, AP-staining.

- Enzyme-linked Immunoabsorbent Assay

## Gene Info — PPP4C

Entrez GeneID	<a href="#">5531</a>
Protein Accession#	<a href="#">NP_002711.1</a>
Gene Name	PPP4C
Gene Alias	PP4, PPH3, PPX
Gene Description	protein phosphatase 4 (formerly X), catalytic subunit

Omim ID	<a href="#">602035</a>
Gene Ontology	<a href="#">Hyperlink</a>
Gene Summary	O
Other Designations	Protein phosphatase 4, catalytic subunit

## Publication Reference

- [Greatwall-phosphorylated Endosulfine is both an inhibitor and a substrate of PP2A-B55 heterotrimers.](#)

Williams BC, Filter JJ, Blake-Hodek KA, Wadzinski BE, Fuda NJ, Shalloway D, Goldberg ML.  
ELife 2014 Mar; 3:e01695.

Application: WB-Tr, Drosophila, S2 cells

- [Protein phosphatase 4 regulates apoptosis, proliferation and mutation rate of human cells.](#)

Mourtada-Maarabouni M, Williams GT.  
Biochimica et Biophysica Acta 2008 Aug; 1783(8):1490.

Application: WB-Tr, Human, HEK 293T cells

## Disease

- [Autistic Disorder](#)
- [Genetic Predisposition to Disease](#)