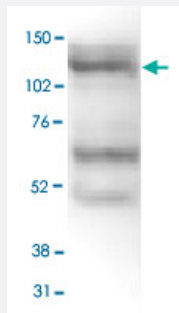


KDM4A polyclonal antibody

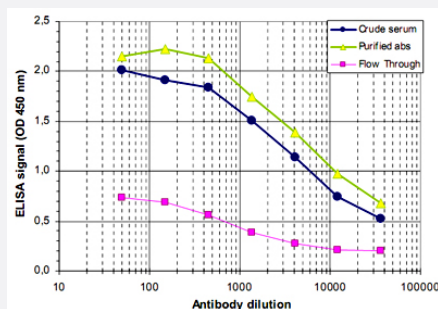
Catalog # PAB14135 Size 50 ug

Applications



Western Blot (Cell lysate)

Nuclear extracts from HeLa cells (40 ug) were analysed by Western blot using KDM4A polyclonal antibody (Cat # PAB14135) diluted 1 : 500 in TBS-Tween containing 5% skimmed milk.



Enzyme-linked Immunoabsorbent Assay

ELISA was performed using a serial dilution of KDM4A polyclonal antibody (Cat # PAB14135), crude serum and flow through. The plates were coated with the peptide used for immunization of the rabbit. By plotting the absorbance against the antibody dilution, the titer of the purified antibody was estimated to be 1 : 9,000.

Specification

Product Description	Rabbit polyclonal antibody raised against synthetic peptide of KDM4A.
Immunogen	A synthetic peptide (conjugated with KLH) corresponding to internal region of human KDM4A.
Host	Rabbit
Reactivity	Human
Form	Liquid
Recommend Usage	ELISA (1:100-1:500) Western Blot (1:500) The optimal working dilution should be determined by the end user.

Storage Buffer	In PBS (0.05% sodium azide, 0.05% proclin 300)
Storage Instruction	Store at -20°C. For long term storage store at -80°C. Aliquot to avoid repeated freezing and thawing.
Note	This product contains sodium azide: a POISONOUS AND HAZARDOUS SUBSTANCE which should be handled by trained staff only.

Applications

- Western Blot (Cell lysate)

Nuclear extracts from HeLa cells (40 ug) were analysed by Western blot using KDM4A polyclonal antibody (Cat # PAB14135) diluted 1 : 500 in TBS-Tween containing 5% skimmed milk.

- Enzyme-linked Immunoabsorbent Assay

ELISA was performed using a serial dilution of KDM4A polyclonal antibody (Cat # PAB14135), crude serum and flow through. The plates were coated with the peptide used for immunization of the rabbit. By plotting the absorbance against the antibody dilution, the titer of the purified antibody was estimated to be 1 : 9,000.

Gene Info — JMJD2A

Entrez GeneID	9682
Protein Accession#	O75164
Gene Name	JMJD2A
Gene Alias	JHDM3A, JMJD2, KDM4A, KIAA0677
Gene Description	jumonji domain containing 2A
Omim ID	609764
Gene Ontology	Hyperlink
Gene Summary	This gene is a member of the Jumonji domain 2 (JMJD2) family and encodes a protein containing a JmjN domain, a JmjC domain, a JD2H domain, two TUDOR domains, and two PHD-type zinc fingers. This nuclear protein functions as a trimethylation-specific demethylase, converting specific trimethylated histone residues to the dimethylated form, and as a transcriptional repressor. [provided by RefSeq]
Other Designations	OTTHUMP00000008810Jumonji C domain-containing histone demethylase 3A