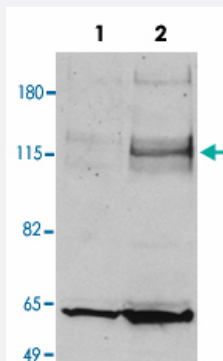


# PML polyclonal antibody

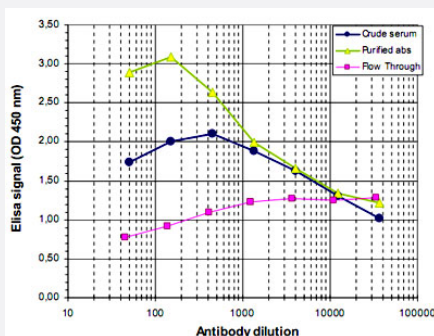
Catalog # PAB14133      Size 50 ug

## Applications



### Western Blot (Transfected lysate)

Human embryonic kidney cells (293T) were transfected with an ER-tagged PML/RAR fusion protein. Nuclear extracts (50 ug) from control (Lane 1) and from transfected cells (Lane 2) were analysed by Western blot using PmL polyclonal antibody (Cat # PAB14133). The antibody was diluted 1 : 750 in TBS-Tween containing 5% milk powder. The smaller band of approximately 60 kDa might represent the endogenous PmL protein.



### Enzyme-linked Immunoabsorbent Assay

ELISA was performed using a serial dilution of PML polyclonal antibody (Cat # PAB14133), crude serum and Flow Through in antigen coated wells. By plotting the absorbance against the antibody dilution, the titer of the purified antibody was estimated to be 1 : 6,000.

## Specification

Product Description	Rabbit polyclonal antibody raised against synthetic peptide of PML.
Immunogen	A mixture of synthetic peptides (conjugated with KLH) that corresponding to human PML.
Host	Rabbit
Reactivity	Human
Form	Liquid

<b>Recommend Usage</b>	ELISA (1:100-1:200) Western Blot (1:750) The optimal working dilution should be determined by the end user.
<b>Storage Buffer</b>	In PBS (0.05% sodium azide, 0.05% proclin 300)
<b>Storage Instruction</b>	Store at -80°C. Aliquot to avoid repeated freezing and thawing.
<b>Note</b>	This product contains sodium azide: a POISONOUS AND HAZARDOUS SUBSTANCE which should be handled by trained staff only.

## Applications

- Western Blot (Transfected lysate)

Human embryonic kidney cells (293T) were transfected with an ER-tagged PML/RAR fusion protein.

Nuclear extracts (50 ug) from control (Lane 1) and from transfected cells (Lane 2) were analysed by Western blot using PmL polyclonal antibody (Cat # PAB14133).

The antibody was diluted 1 : 750 in TBS-Tween containing 5% milk powder.

The smaller band of approximately 60 kDa might represent the endogenous PmL protein.

- Enzyme-linked Immunoabsorbent Assay

ELISA was performed using a serial dilution of PML polyclonal antibody (Cat # PAB14133), crude serum and Flow Through in antigen coated wells. By plotting the absorbance against the antibody dilution, the titer of the purified antibody was estimated to be 1 : 6,000.

## Gene Info — PML

<b>Entrez GeneID</b>	<a href="#">5371</a>
<b>Protein Accession#</b>	<a href="#">P29590</a>
<b>Gene Name</b>	PML
<b>Gene Alias</b>	MYL, PP8675, RNF71, TRIM19
<b>Gene Description</b>	promyelocytic leukemia
<b>Omim ID</b>	<a href="#">102578</a>
<b>Gene Ontology</b>	<a href="#">Hyperlink</a>

**Gene Summary**

The protein encoded by this gene is a member of the tripartite motif (TRIM) family. The TRIM motif includes three zinc-binding domains, a RING, a B-box type 1 and a B-box type 2, and a coiled-coil region. This phosphoprotein localizes to nuclear bodies where it functions as a transcription factor and tumor suppressor. Its expression is cell-cycle related and it regulates the p53 response to oncogenic signals. The gene is often involved in the translocation with the retinoic acid receptor alpha gene associated with acute promyelocytic leukemia (APL). Extensive alternative splicing of this gene results in several variations of the protein's central and C-terminal regions; all variants encode the same N-terminus. Alternatively spliced transcript variants encoding different isoforms have been identified. [provided by RefSeq]

**Other Designations**

promyelocytic leukemia protein|promyelocytic leukemia, inducer of|tripartite motif protein TRIM19

**Pathway**

- [Acute myeloid leukemia](#)
- [Pathways in cancer](#)
- [Ubiquitin mediated proteolysis](#)

**Disease**

- [Cerebral Hemorrhage](#)
- [Genetic Predisposition to Disease](#)
- [Hypertension](#)
- [Intracranial Hemorrhages](#)
- [Leukemia](#)
- [Stroke](#)
- [Subarachnoid Hemorrhage](#)
- [Tobacco Use Disorder](#)