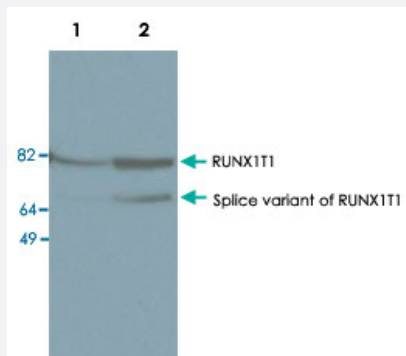


RUNX1T1 polyclonal antibody

Catalog # PAB14127

Size 50 ug

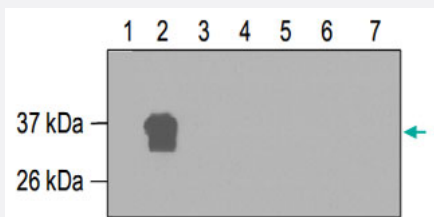
Applications



Western Blot (Cell lysate)

Western blot was performed on nuclear extracts from KAS-6/1 cells (human myeloma cell line, lane 1) and SKNO-1 cells (human acute myeloblastic leukaemia, lane 2) with RUNX1T1 polyclonal antibody (Cat # PAB14127), diluted 1 : 1,000 in TBS-Tween containing 5% skimmed milk.

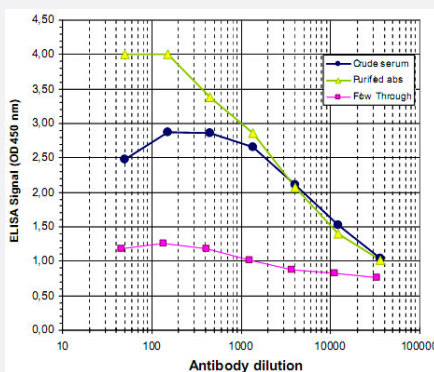
The location of RUNX1T1 and a presumed splice variant (missing 106 C-terminal amino acids) are indicated on the right.



Western Blot (Recombinant protein)

Western blot was performed on seven GST-fusion proteins containing different fragments of RUNX1T1 (Lane 1~7).

RUNX1T1 polyclonal antibody (Cat # PAB14127) was used at dilution 1 : 1,000 in TBS-Tween containing 5% skimmed milk.



Enzyme-linked Immunoabsorbent Assay

ELISA was performed using a serial dilution of RUNX1T1 polyclonal antibody (Cat # PAB14127), crude serum and flow through in antigen coated wells.

The synthetic peptide used to immunise the rabbits, served as antigen.

By plotting the absorbance against the antibody dilution, the titer of the antibody was estimated to be 1 : 5,250.

Specification

Product Description

Rabbit polyclonal antibody raised against synthetic peptide of RUNX1T1.

Immunogen	A synthetic peptide (conjugated with KLH) corresponding to RUNX1T1.
Host	Rabbit
Reactivity	Human
Specificity	This antibody recognizes the ETO (RUNX1T1) part of the fusion protein.
Form	Liquid
Recommend Usage	ELISA (1:100) Western Blot (1:1000) The optimal working dilution should be determined by the end user.
Storage Buffer	In PBS (0.05% sodium azide, 0.05% proclin 300)
Storage Instruction	Store at -20°C. For long term storage store at -80°C. Aliquot to avoid repeated freezing and thawing.
Note	This product contains sodium azide: a POISONOUS AND HAZARDOUS SUBSTANCE which should be handled by trained staff only.

Applications

- Western Blot (Cell lysate)

Western blot was performed on nuclear extracts from KAS-6/1 cells (human myeloma cell line, lane 1) and SKNO-1 cells (human acute myeloblastic leukaemia, lane 2) with RUNX1T1 polyclonal antibody (Cat # PAB14127), diluted 1 : 1,000 in TBS-Tween containing 5% skimmed milk.

The location of RUNX1T1 and a presumed splice variant (missing 106 C-terminal amino acids) are indicated on the right.

- Western Blot (Recombinant protein)

Western blot was performed on seven GST-fusion proteins containing different fragments of RUNX1T1 (Lane 1~7).

RUNX1T1 polyclonal antibody (Cat # PAB14127) was used at dilution 1 : 1,000 in TBS-Tween containing 5% skimmed milk.

- Enzyme-linked Immunoabsorbent Assay

ELISA was performed using a serial dilution of RUNX1T1 polyclonal antibody (Cat # PAB14127), crude serum and flow through in antigen coated wells.

The synthetic peptide used to immunise the rabbits, served as antigen.

By plotting the absorbance against the antibody dilution, the titer of the antibody was estimated to be 1 : 5,250.