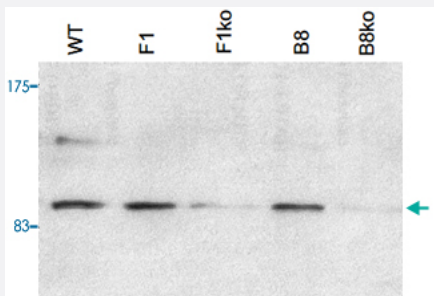


PHF8 polyclonal antibody

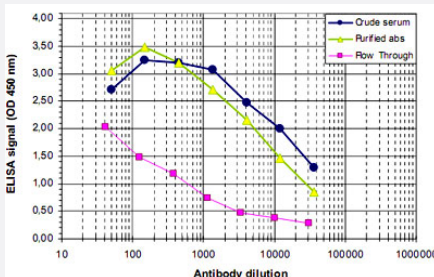
Catalog # PAB14120 Size 50 ug

Applications



Western Blot (Cell lysate)

E14TG2A (mouse embryonic stem cells) were transfected with a conditional allele of PHF8. Nuclear extracts (135 ug) from wild type cells (WT) and from 2 clones (F1, B8) with an active and a targeted allele (F1ko, B8ko), respectively, were analysed by Western blot using PHF8 polyclonal antibody (Cat # PAB14120). The antibody was diluted 1 : 1,000.



Enzyme-linked Immunoabsorbent Assay

ELISA was performed using a serial dilution of PHF8 polyclonal antibody (Cat # PAB14120), crude serum and Flow Through in antigen coated wells. By plotting the absorbance against the antibody dilution, the titer of the purified antibody was estimated to be 1 : 6,500.

Specification

Product Description	Rabbit polyclonal antibody raised against synthetic peptide of PHF8.
Immunogen	A mixture of synthetic peptides (conjugated with KLH) that corresponding to human PHF8.
Host	Rabbit
Reactivity	Human, Mouse
Form	Liquid
Recommend Usage	ELISA (1:100-1:500) Western Blot (1:1000) The optimal working dilution should be determined by the end user.

Storage Buffer	In PBS (0.05% sodium azide, 0.05% proclin 300)
Storage Instruction	Store at -20°C. For long term storage store at -80°C. Aliquot to avoid repeated freezing and thawing.
Note	This product contains sodium azide: a POISONOUS AND HAZARDOUS SUBSTANCE which should be handled by trained staff only.

Applications

- Western Blot (Cell lysate)

E14TG2A (mouse embryonic stem cells) were transfected with a conditional allele of PHF8.

Nuclear extracts (135 ug) from wild type cells (WT) and from 2 clones (F1, B8) with an active and a targeted allele (F1ko, B8ko), respectively, were analysed by Western blot using PHF8 polyclonal antibody (Cat # PAB14120).

The antibody was diluted 1 : 1,000.

- Enzyme-linked Immunoabsorbent Assay

ELISA was performed using a serial dilution of PHF8 polyclonal antibody (Cat # PAB14120), crude serum and Flow Through in antigen coated wells.

By plotting the absorbance against the antibody dilution, the titer of the purified antibody was estimated to be 1 : 6,500.

Gene Info — PHF8

Entrez GeneID	23133
Protein Accession#	Q9UPP1
Gene Name	PHF8
Gene Alias	DKFZp686E0868, JHDM1F, KIAA1111, MRXSSD, ZNF422
Gene Description	PHD finger protein 8
Omim ID	300263 300560
Gene Ontology	Hyperlink
Other Designations	OTTHUMP00000061869jumonji C domain-containing histone demethylase 1F

Disease

- [Autistic Disorder](#)

- [Chromosome Deletion](#)
- [Cleft Lip](#)
- [Cleft Palate](#)
- [Mental Disorders](#)
- [Mental Retardation](#)