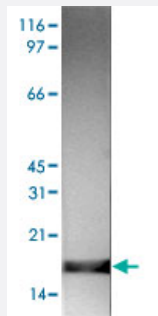


H3K4me2 polyclonal antibody

Catalog # PAB14111

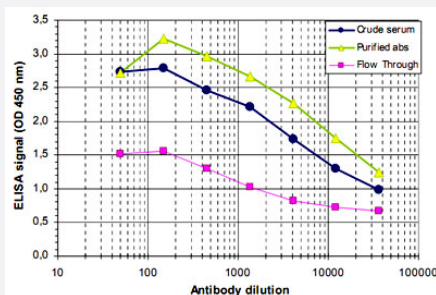
Size 50 ug

Applications



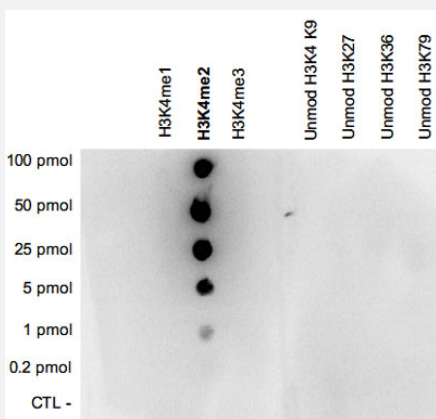
Western Blot (Cell lysate)

Nuclear extracts of HeLa cells (15 ug) were analysed by Western blot using H3K4me2 polyclonal antibody (Cat # PAB14111) diluted 1 : 1,000 in TBS-Tween containing 5% skimmed milk.



Enzyme-linked Immunoabsorbent Assay

ELISA was performed using a serial dilution of H3K4me2 polyclonal antibody (Cat # PAB14111), crude serum and flow through in antigen coated wells. The antigen used was a peptide containing the histone modification of interest. By plotting the absorbance against the antibody dilution, the titer of the purified antibody was estimated to be 1 : 18,300.



Dot Blot

A Dot Blot analysis was performed to test the cross reactivity of H3K4me2 polyclonal antibody (Cat # PAB14111) with peptides containing other modifications and unmodified sequences of histone H3.

One hundred to 0.2 pmol of the respective peptides were spotted on a membrane.

The antibody was used at a dilution of 1 : 20,000.

Figure shows a high specificity of the antibody for the modification of interest.

Specification

Product Description

Rabbit polyclonal antibody raised against synthetic peptide of H3K4me2.

Immunogen	A synthetic peptide (conjugated with KLH) corresponding to region of histone H3 containing the dimethylated lysine 4 (H3K4me2).
Host	Rabbit
Reactivity	Human
Form	Liquid
Recommend Usage	ELISA (1:100-1:500) Dot Blot (1:20000) Western Blot (1:1000) ChIP (5 ug/ChIP) The optimal working dilution should be determined by the end user.
Storage Buffer	In PBS (0.05% sodium azide, 0.05% proclin 300)
Storage Instruction	Store at -20°C. For long term storage store at -80°C. Aliquot to avoid repeated freezing and thawing.
Note	This product contains sodium azide: a POISONOUS AND HAZARDOUS SUBSTANCE which should be handled by trained staff only.

Applications

- ChIP

- Western Blot (Cell lysate)

Nuclear extracts of HeLa cells (15 ug) were analysed by Western blot using H3K4me2 polyclonal antibody (Cat # PAB14111) diluted 1 : 1,000 in TBS-Tween containing 5% skimmed milk.

- Enzyme-linked Immunoabsorbent Assay

ELISA was performed using a serial dilution of H3K4me2 polyclonal antibody (Cat # PAB14111), crude serum and flow through in antigen coated wells. The antigen used was a peptide containing the histone modification of interest. By plotting the absorbance against the antibody dilution, the titer of the purified antibody was estimated to be 1 : 18,300.

- Dot Blot

A Dot Blot analysis was performed to test the cross reactivity of H3K4me2 polyclonal antibody (Cat # PAB14111) with peptides containing other modifications and unmodified sequences of histone H3.

One hundred to 0.2 pmol of the respective peptides were spotted on a membrane.

The antibody was used at a dilution of 1 : 20,000.

Figure shows a high specificity of the antibody for the modification of interest.

Publication Reference

- [Dynamic regulation of histone lysine methylation by demethylases.](#)

Shi Y, Whetstone JR.

Molecular Cell 2007 Jan; 25(1):1.

- [Intra- and inter-nucleosomal protein-DNA interactions of the core histone tail domains in a model system.](#)

Zheng C, Hayes JJ.

The Journal of Biological Chemistry 2003 Apr; 278(26):24217.

- [Translating the histone code.](#)

Jenuwein T, Allis CD.

Science 2001 Aug; 293(5532):1074.