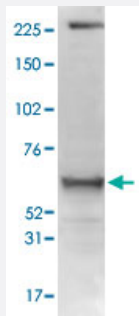


MTPAP polyclonal antibody

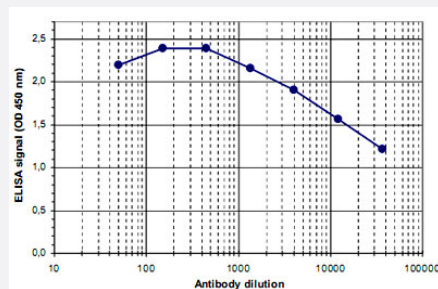
Catalog # PAB14094 Size 100 uL

Applications



Western Blot (Cell lysate)

Whole cell extracts of U-2 OS cells (80 ug) were analysed by Western blot using MTPAP polyclonal antibody (Cat # PAB14094) diluted 1 : 1,000 in TBS-Tween containing 5% skimmed milk.



Enzyme-linked Immunoabsorbent Assay

ELISA was performed using a serial dilution of MTPAP polyclonal antibody (Cat # PAB14094). The plates were coated with the peptide used for immunization of the rabbit. By plotting the absorbance against the antibody dilution, the titer of the crude serum was estimated to be 1 : 47,000.

Specification

Product Description	Rabbit polyclonal antibody raised against synthetic peptide of MTPAP.
Immunogen	A synthetic peptide (conjugated with KLH) corresponding to C-terminus of human MTPAP.
Host	Rabbit
Reactivity	Human
Form	Liquid
Recommend Usage	ELISA (1:500) Western Blot (1:1000) The optimal working dilution should be determined by the end user.

Storage Buffer	In serum (0.05% sodium azide)
Storage Instruction	Store at -20°C. For long term storage store at -80°C. Aliquot to avoid repeated freezing and thawing.
Note	This product contains sodium azide: a POISONOUS AND HAZARDOUS SUBSTANCE which should be handled by trained staff only.

Applications

- Western Blot (Cell lysate)

Whole cell extracts of U-2 OS cells (80 ug) were analysed by Western blot using MTPAP polyclonal antibody (Cat # PAB14094) diluted 1 : 1,000 in TBS-Tween containing 5% skimmed milk.

- Enzyme-linked Immunoabsorbent Assay

ELISA was performed using a serial dilution of MTPAP polyclonal antibody (Cat # PAB14094). The plates were coated with the peptide used for immunization of the rabbit. By plotting the absorbance against the antibody dilution, the titer of the crude serum was estimated to be 1 : 47,000.

Gene Info — MTPAP

Entrez GeneID	55149
Protein Accession#	Q9NVV4
Gene Name	MTPAP
Gene Alias	FLJ10486, PAPD1, RP11-305E6.3
Gene Description	mitochondrial poly(A) polymerase
Gene Ontology	Hyperlink
Other Designations	OTTHUMP00000019397 OTTHUMP00000046259 PAP associated domain containing 1

Disease

- [Alzheimer Disease](#)
- [Cerebral Amyloid Angiopathy](#)
- [Diabetes Mellitus](#)

- [Genetic Predisposition to Disease](#)
- [Neuroblastoma](#)
- [Tobacco Use Disorder](#)