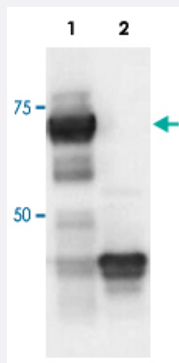


SOX4 polyclonal antibody

Catalog # PAB14092 Size 100 uL

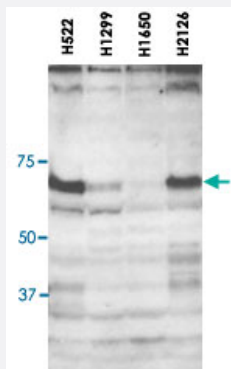
Applications



Western Blot (Transfected lysate)

H1299 (lung carcinoma cells) were transfected with HA-tagged SOX4 (Lane 1) or with a HA-tagged truncated SOX4 (395X mutant, Lane 2).

Whole cell extracts (60~100 ug) were analysed by Western blot using SOX4 polyclonal antibody (Cat # PAB14092) diluted 1 : 4,000 in TBS-Tween containing 2% skimmed milk.

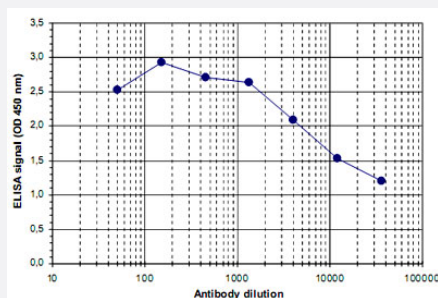


Western Blot

Whole cell extracts of 4 different lung carcinoma cell lines were analysed by Western blot with SOX4 polyclonal antibody (Cat # PAB14092) as described above.

The H522 cells are known to overexpress SOX4.

Western blot performed by Montse Sanchez-Céspedes and Sandra Castillo Díez, Catalan Institute of Oncology, Barcelona, Spain.



Enzyme-linked Immunoabsorbent Assay

ELISA was performed using a serial dilution of SOX4 polyclonal antibody (Cat # PAB14092). The plates were coated with the peptides used for immunization of the rabbit. By plotting the absorbance against the antibody dilution, the titer of the crude serum was estimated to be 1 : 18,000.

Specification

Product Description

Rabbit polyclonal antibody raised against synthetic peptide of SOX4.

Immunogen	A mixture of synthetic peptides (conjugated with KLH) corresponding to N-terminus and to C-terminus of human SOX4.
Host	Rabbit
Reactivity	Human
Form	Liquid
Recommend Usage	ELISA (1:100-1:1000) Western Blot (1:4000) The optimal working dilution should be determined by the end user.
Storage Buffer	In serum (0.05% sodium azide)
Storage Instruction	Store at -20°C. For long term storage store at -80°C. Aliquot to avoid repeated freezing and thawing.
Note	This product contains sodium azide: a POISONOUS AND HAZARDOUS SUBSTANCE which should be handled by trained staff only.

Applications

- Western Blot (Transfected lysate)

H1299 (lung carcinoma cells) were transfected with HA-tagged SOX4 (Lane 1) or with a HA-tagged truncated SOX4 (395X mutant, Lane 2).

Whole cell extracts (60~100 ug) were analysed by Western blot using SOX4 polyclonal antibody (Cat # PAB14092) diluted 1 : 4,000 in TBS-Tween containing 2% skimmed milk.

- Western Blot

Whole cell extracts of 4 different lung carcinoma cell lines were analysed by Western blot with SOX4 polyclonal antibody (Cat # PAB14092) as described above.

The H522 cells are known to overexpress SOX4.

Western blot performed by Montse Sanchez-Céspedes and Sandra Castillo Díez, Catalan Institute of Oncology, Barcelona, Spain.

- Enzyme-linked Immunoabsorbent Assay

ELISA was performed using a serial dilution of SOX4 polyclonal antibody (Cat # PAB14092). The plates were coated with the peptides used for immunization of the rabbit. By plotting the absorbance against the antibody dilution, the titer of the crude serum was estimated to be 1 : 18,000.

Gene Info — SOX4

Entrez GeneID

[6659](#)

Protein Accession#	Q06945
Gene Name	SOX4
Gene Alias	EVI16
Gene Description	SRY (sex determining region Y)-box 4
Omim ID	184430
Gene Ontology	Hyperlink
Gene Summary	This intronless gene encodes a member of the SOX (SRY-related HMG-box) family of transcription factors involved in the regulation of embryonic development and in the determination of the cell fate. The encoded protein may act as a transcriptional regulator after forming a protein complex with other proteins, such as syndecan binding protein (syntenin). The protein may function in the apoptosis pathway leading to cell death as well as to tumorigenesis and may mediate downstream effects of parathyroid hormone (PTH) and PTH-related protein (PTHrP) in bone development. The solution structure has been resolved for the HMG-box of a similar mouse protein. [provided by RefSeq]
Other Designations	OTTHUMP00000039358 SRY-related HMG-box gene 4 ecotropic viral integration site 16

Publication Reference

- [Bone morphogenetic protein and activin membrane-bound inhibitor overexpression inhibits gastric tumor cell invasion via the transforming growth factor- \$\beta\$ /epithelial-mesenchymal transition signaling pathway.](#)

Yuan CL, Liang R, Liu ZH, Li YQ, Luo XL, Ye JZ, Lin Y.

Experimental and Therapeutic Medicine 2018 Jun; 15(6):5422.

Application: IHC-P, WB-Tr, Human, Mouse, BGC-823 cells, Gastric carcinoma

- [The SRY-HMG box gene, SOX4, is a target of gene amplification at chromosome 6p in lung cancer.](#)

Medina PP, Castillo SD, Blanco S, Sanz-Garcia M, Largo C, Alvarez S, Yokota J, Gonzalez-Neira A, Benitez J, Clevers HC, Cigudosa JC, Lazo PA, Sanchez-Cespedes M.

Human Molecular Genetics 2009 Jan; 18(7):1343.