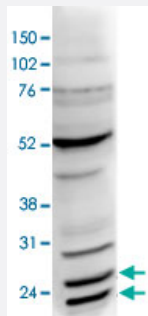


BCL7C polyclonal antibody

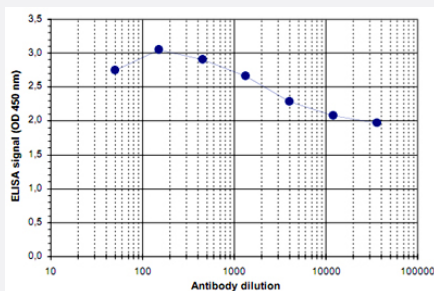
Catalog # PAB14089 Size 100 uL

Applications



Western Blot (Cell lysate)

Nuclear extracts of HeLa cells (40 ug) were analysed by Western blot using BCL7C polyclonal antibody (Cat # PAB14089) diluted 1 : 1,000 in TBS-Tween containing 5% skimmed milk.



Enzyme-linked Immunoabsorbent Assay

ELISA was performed using a serial dilution of BCL7C polyclonal antibody (Cat # PAB14089). The plates were coated with the peptides used for immunization of the rabbit. By plotting the absorbance against the antibody dilution, the titer of the crude serum was estimated to be 1 : 209,000.

Specification

Product Description	Rabbit polyclonal antibody raised against synthetic peptide of BCL7C.
Immunogen	A mixture of synthetic peptides (conjugated with KLH) that corresponding to internal region and to C-terminus of human BCL7C.
Host	Rabbit
Reactivity	Human
Form	Liquid

Recommend Usage	ELISA (1:100-1:1000) Western Blot (1:1000) The optimal working dilution should be determined by the end user.
Storage Buffer	In serum (0.05% sodium azide)
Storage Instruction	Store at -20°C. For long term storage store at -80°C. Aliquot to avoid repeated freezing and thawing.
Note	This product contains sodium azide: a POISONOUS AND HAZARDOUS SUBSTANCE which should be handled by trained staff only.

Applications

- Western Blot (Cell lysate)

Nuclear extracts of HeLa cells (40 ug) were analysed by Western blot using BCL7C polyclonal antibody (Cat # PAB14089) diluted 1 : 1,000 in TBS-Tween containing 5% skimmed milk.

- Enzyme-linked Immunoabsorbent Assay

ELISA was performed using a serial dilution of BCL7C polyclonal antibody (Cat # PAB14089). The plates were coated with the peptides used for immunization of the rabbit. By plotting the absorbance against the antibody dilution, the titer of the crude serum was estimated to be 1 : 209,000.

Gene Info — BCL7C

Entrez GeneID	9274
Protein Accession#	Q8WUZ0
Gene Name	BCL7C
Gene Alias	-
Gene Description	B-cell CLL/lymphoma 7C
Omim ID	605847
Gene Ontology	Hyperlink
Gene Summary	This gene is identified by the similarity of its product to the N-terminal region of BCL7A protein. The BCL7A protein is encoded by the gene known to be directly involved in a three-way gene translocation in a Burkitt lymphoma cell line. The function of this gene has not yet been determined. [provided by RefSeq]
Other Designations	-

Disease

- [Genetic Predisposition to Disease](#)
- [Hematologic Diseases](#)
- [Hodgkin Disease](#)
- [Lymphoma](#)
- [Lymphoproliferative Disorders](#)
- [Occupational Diseases](#)
- [Waldenstrom Macroglobulinemia](#)
- [Werner syndrome](#)