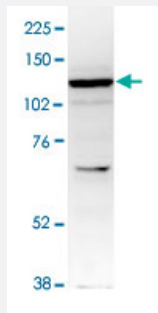


# ZBTB38 polyclonal antibody

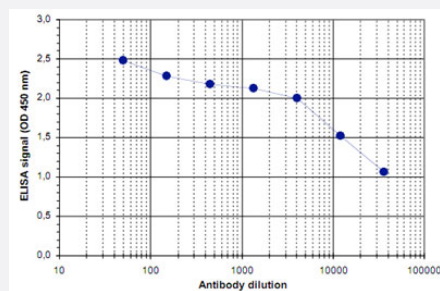
Catalog # PAB14088      Size 100 uL

## Applications



### Western Blot (Cell lysate)

Nuclear extracts of HeLa cells (40 ug) were analysed by Western blot using ZBTB38 polyclonal antibody (Cat # PAB14088) diluted 1 : 1,000 in TBS-Tween containing 5% skimmed milk.



### Enzyme-linked Immunoabsorbent Assay

ELISA was performed using a serial dilution of ZBTB38 polyclonal antibody (Cat # PAB14088).

The plates were coated with the peptides used for immunization of the rabbit. By plotting the absorbance against the antibody dilution, the titer of the crude serum was estimated to be 1 : 26,000.

## Specification

<b>Product Description</b>	Rabbit polyclonal antibody raised against synthetic peptide of ZBTB38.
<b>Immunogen</b>	A mixture of synthetic peptides (conjugated with KLH) that two corresponding to internal region and one to C-terminus of human ZBTB38.
<b>Host</b>	Rabbit
<b>Reactivity</b>	Human
<b>Form</b>	Liquid

<b>Recommend Usage</b>	ELISA (1:100-1:1000) Western Blot (1:1000) The optimal working dilution should be determined by the end user.
<b>Storage Buffer</b>	In serum (0.05% sodium azide)
<b>Storage Instruction</b>	Store at -20°C. For long term storage store at -80°C. Aliquot to avoid repeated freezing and thawing.
<b>Note</b>	This product contains sodium azide: a POISONOUS AND HAZARDOUS SUBSTANCE which should be handled by trained staff only.

## Applications

- Western Blot (Cell lysate)

Nuclear extracts of HeLa cells (40 ug) were analysed by Western blot using ZBTB38 polyclonal antibody (Cat # PAB14088) diluted 1 : 1,000 in TBS-Tween containing 5% skimmed milk.

- Enzyme-linked Immunoabsorbent Assay

ELISA was performed using a serial dilution of ZBTB38 polyclonal antibody (Cat # PAB14088).

The plates were coated with the peptides used for immunization of the rabbit.

By plotting the absorbance against the antibody dilution, the titer of the crude serum was estimated to be 1 : 26,000.

## Gene Info — ZBTB38

<b>Entrez GeneID</b>	<a href="#">253461</a>
<b>Protein Accession#</b>	<a href="#">Q8NAP3</a>
<b>Gene Name</b>	ZBTB38
<b>Gene Alias</b>	CIBZ, FLJ22332, FLJ31131, FLJ35036, STQTL10
<b>Gene Description</b>	zinc finger and BTB domain containing 38
<b>Gene Ontology</b>	<a href="#">Hyperlink</a>
<b>Other Designations</b>	-

## Disease

- [Crohn Disease](#)

- [Diabetes Mellitus](#)
- [Genetic Predisposition to Disease](#)
- [Growth Disorders](#)