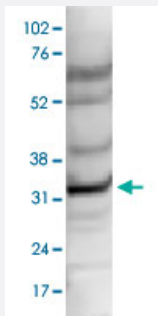


CCDC101 polyclonal antibody

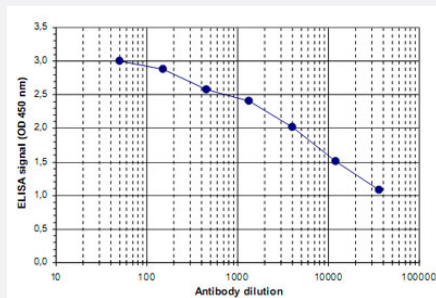
Catalog # PAB14087 Size 100 uL

Applications



Western Blot (Cell lysate)

Nuclear extracts of HeLa cells (40 ug) were analysed by Western blot using CCDC101 polyclonal antibody (Cat # PAB14087) diluted 1 : 1,000 in TBS-Tween containing 5% skimmed milk.



Enzyme-linked Immunoabsorbent Assay

ELISA was performed using a serial dilution of CCDC101 polyclonal antibody (Cat # PAB14087). The plates were coated with the peptides used for immunization of the rabbit. By plotting the absorbance against the antibody dilution, the titer of the crude serum was estimated to be 1 : 13,700.

Specification

Product Description	Rabbit polyclonal antibody raised against synthetic peptide of CCDC101.
Immunogen	A mixture of synthetic peptides (conjugated with KLH) that corresponding to internal region and C-terminus of human CCDC101.
Host	Rabbit
Reactivity	Human
Form	Liquid

Recommend Usage	ELISA (1:100-1:200) Western Blot (1:1000) The optimal working dilution should be determined by the end user.
Storage Buffer	In serum (0.05% sodium azide)
Storage Instruction	Store at -20°C. For long term storage store at -80°C. Aliquot to avoid repeated freezing and thawing.
Note	This product contains sodium azide: a POISONOUS AND HAZARDOUS SUBSTANCE which should be handled by trained staff only.

Applications

- Western Blot (Cell lysate)

Nuclear extracts of HeLa cells (40 ug) were analysed by Western blot using CCDC101 polyclonal antibody (Cat # PAB14087) diluted 1 : 1,000 in TBS-Tween containing 5% skimmed milk.

- Enzyme-linked Immunoabsorbent Assay

ELISA was performed using a serial dilution of CCDC101 polyclonal antibody (Cat # PAB14087).

The plates were coated with the peptides used for immunization of the rabbit.

By plotting the absorbance against the antibody dilution, the titer of the crude serum was estimated to be 1 : 13,700.

Gene Info — CCDC101

Entrez GeneID	112869
Protein Accession#	Q96ES7
Gene Name	CCDC101
Gene Alias	FLJ32446
Gene Description	coiled-coil domain containing 101
Gene Ontology	Hyperlink
Other Designations	-

Disease

- [Kidney Failure](#)