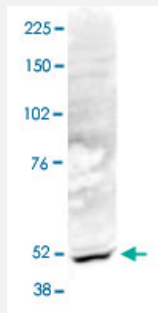


ACTL6B polyclonal antibody

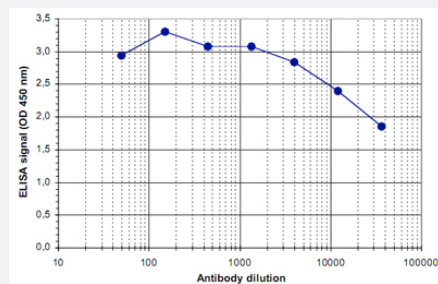
Catalog # PAB14085 Size 100 uL

Applications



Western Blot (Cell lysate)

Nuclear extracts of HeLa cells (40 ug) were analysed by Western blot using ACTL6B polyclonal antibody (Cat # PAB14085) diluted 1 : 1,000 in TBS-Tween containing 5% skimmed milk.



Enzyme-linked Immunoabsorbent Assay

ELISA was performed using a serial dilution of ACTL6B polyclonal antibody (Cat # PAB14085).

The plates were coated with the peptide used for immunization of the rabbit. By plotting the absorbance against the antibody dilution, the titer of the crude serum was estimated to be 1 : 76,000.

Specification

Product Description	Rabbit polyclonal antibody raised against synthetic peptide of ACTL6B.
Immunogen	A synthetic peptide (conjugated with KLH) corresponding to internal region of human ACTL6B.
Host	Rabbit
Reactivity	Human
Form	Liquid
Recommend Usage	ELISA (1:500-1:1000) Western Blot (1:1000) The optimal working dilution should be determined by the end user.

Storage Buffer	In serum (0.05% sodium azide)
Storage Instruction	Store at -20°C. For long term storage store at -80°C. Aliquot to avoid repeated freezing and thawing.
Note	This product contains sodium azide: a POISONOUS AND HAZARDOUS SUBSTANCE which should be handled by trained staff only.

Applications

- Western Blot (Cell lysate)

Nuclear extracts of HeLa cells (40 ug) were analysed by Western blot using ACTL6B polyclonal antibody (Cat # PAB14085) diluted 1 : 1,000 in TBS-Tween containing 5% skimmed milk.

- Enzyme-linked Immunoabsorbent Assay

ELISA was performed using a serial dilution of ACTL6B polyclonal antibody (Cat # PAB14085).

The plates were coated with the peptide used for immunization of the rabbit.

By plotting the absorbance against the antibody dilution, the titer of the crude serum was estimated to be 1 : 76,000.

Gene Info — ACTL6B

Entrez GeneID	51412
Protein Accession#	O94805
Gene Name	ACTL6B
Gene Alias	ACTL6, BAF53B
Gene Description	actin-like 6B
Gene Ontology	Hyperlink
Gene Summary	The protein encoded by this gene is a member of a family of actin-related proteins (ARPs) which share significant amino acid sequence identity to conventional actins. Both actins and ARPs have an actin fold, which is an ATP-binding cleft, as a common feature. The ARPs are involved in diverse cellular processes, including vesicular transport, spindle orientation, nuclear migration and chromatin remodeling. This gene encodes a subunit of the BAF (BRG1/brm-associated factor) complex in mammals, which is functionally related to SWI/SNF complex in <i>S. cerevisiae</i> and <i>Drosophila</i> ; the latter is thought to facilitate transcriptional activation of specific genes by antagonizing chromatin-mediated transcriptional repression. This subunit may be involved in the regulation of genes by structural modulation of their chromatin, specifically in the brain. [provided by RefSeq]
Other Designations	53 kDa BRG1-associated factor B actin-like 6 actin-related protein hArpN alpha

Disease

- [Cardiovascular Diseases](#)
- [Diabetes Mellitus](#)
- [Edema](#)